



**Water Monitoring Result at C7 - Windsor House
Mid-Flood Tide**

Date	Time	Weather Condition	Sampling Depth m		Water Temperature °C		pH		Salinity ppt		DO Saturation %		DO mg/L		Turbidity NTU		Suspended Solids mg/L							
					Value	Average	Value	Average	Value	Average	Value	Average	Value	Average	Value	Average	Value	Average						
22/12/14	7:58	Fine	-	-	17.10	17.10	17.00	8.28	8.28	8.28	31.75	31.75	31.75	83.7	86.7	86.0	6.68	6.91	6.86	4.89	4.82	4.84	<2	<2
	8:00		-	-	16.90	16.90	17.00	8.27	8.27	8.28	31.76	31.75	31.75	86.7	87.0	86.0	6.91	6.95	6.86	4.84	4.80	4.84	<2	<2
24/12/14	7:32	Fine	-	-	18.00	18.00	18.00	8.24	8.24	8.24	31.49	31.49	31.50	88.1	88.0	87.9	6.91	6.90	6.89	2.84	2.85	2.85	5	4.50
	7:34		-	-	18.00	18.00	18.00	8.24	8.24	8.24	31.50	31.50	31.50	88.3	87.0	87.9	6.93	6.83	6.89	2.84	2.85	2.85	4	4.50
26/12/14	10:35	Cloudy	-	-	17.80	17.80	17.80	8.11	8.11	8.11	31.69	31.69	31.69	84.5	84.9	84.8	6.76	6.80	6.79	1.98	2.08	2.10	3	3.00
	10:36		-	-	17.80	17.80	17.80	8.11	8.11	8.11	31.69	31.69	31.69	84.9	84.7	84.8	6.80	6.78	6.79	2.20	2.15	2.10	3	3.00

Remarks:
Single underline denotes exceedance over Action Level.
Double underline denotes exceedance over Limit Level.



**Water Monitoring Result at C1 - HKCEC Extension
Mid-Flood Tide**

Date	Time	Weather Condition	Sampling Depth		Water Temperature			pH			Salinity			DO Saturation		DO		Turbidity		Suspended Solids				
					°C			-			ppt			%		mg/L		NTU		mg/L				
			m	Value	Average	Value	Average	Value	Average	Value	Average	Value	Average	Value	Average	Value	Average	Value	Average	Value	Average			
28/11/14	10:48	Cloudy	Middle	2.5	23.60	23.60	23.60	8.09	8.09	8.12	32.73	32.73	32.80	83.3	82.5	82.8	5.83	5.79	5.81	4.56	4.47	4.52	6	6.50
	10:50		Middle	2.5	23.60	23.60		8.14	8.14		32.87	32.87		82.6	82.6		5.80	5.80		4.51	4.52		7	
1/12/14	14:42	Cloudy	Middle	2.5	23.10	23.10	23.00	8.11	8.11	8.06	32.19	32.19	32.20	74.8	75.2	75.3	5.33	5.76	5.47	4.40	4.40	4.40	4	4.00
	14:44		Middle	2.5	22.90	22.90		8.00	8.00		32.21	32.21		75.4	75.7		5.37	5.40		4.40	4.41		4	
3/12/14	15:03	Cloudy	Middle	3.0	22.30	22.30	22.15	8.03	8.03	8.04	32.72	32.72	32.72	66.3	65.4	64.7	4.79	4.72	4.67	6.72	6.71	6.71	4	4.00
	15:05		Middle	3.0	22.00	22.00		8.04	8.04		32.72	32.72		64.1	63.0		4.61	4.55		6.70	6.69		4	
5/12/14	16:37	Fine	Middle	3.0	21.50	21.50	21.55	7.99	7.99	7.99	32.37	32.37	32.37	63.6	63.4	62.9	4.65	4.64	4.60	2.40	2.45	2.54	3	2.50
	16:39		Middle	3.0	21.60	21.60		7.99	7.99		32.37	32.37		62.9	61.8		4.60	4.52		2.68	2.62		2	
8/12/14	7:55	Fine	Middle	2.5	20.90	20.90	20.85	8.03	8.03	8.04	32.76	32.76	32.78	66.6	65.4	65.3	4.92	4.83	4.82	2.39	2.36	2.37	4	4.50
	7:57		Middle	2.5	20.80	20.80		8.04	8.04		32.79	32.79		63.9	65.1		4.71	4.81		2.37	2.36		5	
10/12/14	8:45	Cloudy	Middle	2.5	21.00	21.00	20.95	8.05	8.05	8.11	32.63	32.63	32.70	63.4	63.4	63.4	4.67	4.68	4.67	2.73	2.68	2.58	5	4.00
	8:47		Middle	2.5	20.90	20.90		8.17	8.17		32.76	32.76		63.3	63.3		4.67	4.66		2.49	2.43		3	
12/12/14	11:00	Fine	Middle	2.5	20.20	20.20	20.20	8.13	8.13	8.14	32.75	32.75	32.74	58.1	58.4	58.5	4.34	4.36	4.37	3.04	3.05	3.03	4	5.00
	11:02		Middle	2.5	20.20	20.20		8.14	8.14		32.73	32.73		58.8	58.6		4.39	4.38		3.03	3.01		6	
15/12/14	14:50	Fine	Middle	3.0	20.30	20.30	20.35	8.04	8.04	8.07	32.72	32.72	32.73	76.9	76.1	76.7	5.73	5.67	5.72	1.90	1.87	1.87	3	2.50
	14:52		Middle	3.0	20.40	20.40		8.09	8.09		32.73	32.73		76.6	77.2		5.72	5.75		1.85	1.85		2	
17/12/14	14:22	Fine	Middle	3.0	18.70	18.70	18.60	8.24	8.24	8.25	32.01	32.01	32.01	86.2	86.1	85.7	6.66	6.65	6.63	2.91	2.98	2.97	<2	<2
	14:24		Middle	3.0	18.50	18.50		8.25	8.25		32.01	32.01		85.6	85.0		6.62	6.57		2.99	2.99		<2	
19/12/14	14:58	Cloudy	Middle	2.5	18.80	18.80	14.10	8.04	8.06	8.06	32.35	32.35	32.35	68.5	67.5	67.4	5.30	5.23	5.22	1.10	1.15	1.14	2	2.00
	15:00		Middle	2.5	0.00	18.80		8.06	8.06		32.35	32.35		67.0	66.6		5.18	5.17		1.15	1.16		<2	
22/12/14	9:09	Fine	Middle	3.0	18.20	18.20	18.20	8.05	8.05	8.06	32.34	32.34	32.35	75.1	74.3	74.1	5.84	5.78	5.76	1.68	1.67	1.63	2	2.50
	9:11		Middle	3.0	18.20	18.20		8.07	8.07		32.35	32.35		73.2	73.7		5.68	5.74		1.60	1.57		3	
24/12/14	10:13	Fine	Middle	2.5	18.40	18.40	18.45	8.14	8.14	8.14	32.30	32.29	32.25	73.4	72.8	72.9	5.67	5.63	5.64	1.62	1.61	1.62	4	3.50
	10:15		Middle	2.5	18.50	18.50		8.14	8.14		32.20	32.20		72.6	72.8		5.62	5.63		1.62	1.63		3	
26/12/14	8:39	Cloudy	Middle	2.0	17.80	17.80	17.80	8.10	8.10	8.11	31.60	31.60	31.61	83.6	83.9	83.1	6.70	6.72	6.66	1.79	1.73	1.71	2	2.00
	8:40		Middle	2.0	17.80	17.80		8.11	8.11		31.61	31.61		82.4	82.5		6.60	6.61		1.68	1.63		2	

Remarks:
Single underline denotes exceedance over Action Level.
Double underline denotes exceedance over Limit Level.



**Water Monitoring Result at P1 - HKCEC Phase I
Mid-Flood Tide**

Date	Time	Weather Condition	Sampling Depth		Water Temperature			pH			Salinity			DO Saturation		DO		Turbidity		Suspended Solids				
					°C			-			ppt			%		mg/L		NTU		mg/L				
			m	Value	Average	Value	Average	Value	Average	Value	Average	Value	Average	Value	Average	Value	Average	Value	Average	Value	Average	Value	Average	
28/11/14	11:04	Cloudy	Middle	2.5	23.60	23.60	23.60	8.14	8.14	8.15	32.87	32.87	32.88	95.6	94.1	92.3	6.72	6.61	6.48	3.56	3.43	3.46	3	4.00
	11:06		Middle	2.5	23.60	23.60		8.16	8.16		32.88	32.88		90.4	89.0		6.36	6.23		3.43	3.43		5	
1/12/14	15:00	Cloudy	Middle	2.5	23.40	23.40	23.30	8.09	8.09	8.09	32.14	32.14	32.15	74.2	74.6	74.7	5.26	5.29	5.30	4.10	4.06	4.04	5	5.00
	15:02		Middle	2.5	23.20	23.20		8.09	8.09		32.15	32.15		74.8	75.3		5.31	5.35		4.01	4.00		5	
3/12/14	15:30	Cloudy	Middle	3.0	22.50	22.50	22.40	8.10	8.10	8.12	32.52	32.52	32.64	65.5	65.0	64.6	4.70	4.67	4.64	1.72	1.71	1.70	3	3.00
	15:32		Middle	3.0	22.30	22.30		8.14	8.14		32.75	32.75		64.1	63.8		4.61	4.58		1.69	1.68		3	
5/12/14	17:01	Fine	Middle	3.0	21.60	21.60	21.50	8.12	8.12	8.14	32.46	32.46	32.34	70.2	70.0	69.8	5.10	5.09	5.08	1.12	1.13	1.15	<2	<2
	17:03		Middle	3.0	21.40	21.40		8.16	8.16		32.21	32.21		69.6	69.5		5.06	5.05		1.16	1.18		<2	
8/12/14	8:44	Fine	Middle	2.5	21.00	21.00	20.95	8.15	8.15	8.16	32.64	32.64	32.69	69.8	68.6	68.2	5.14	5.05	5.02	1.67	1.66	1.66	6	5.50
	8:46		Middle	2.5	20.90	20.90		8.17	8.17		32.73	32.73		67.9	66.3		5.01	4.88		1.66	1.66		5	
10/12/14	9:15	Cloudy	Middle	2.5	20.80	20.80	20.85	8.15	8.15	8.16	32.59	32.59	32.67	65.1	65.0	64.4	4.79	4.79	4.74	1.44	1.42	1.42	5	4.00
	9:17		Middle	2.5	20.90	20.90		8.17	8.17		32.75	32.75		64.0	63.4		4.70	4.67		1.41	1.40		3	
12/12/14	11:31	Fine	Middle	2.5	20.70	20.70	20.60	8.01	8.01	8.06	32.71	32.71	32.72	67.0	67.6	66.9	4.97	5.01	4.97	0.93	0.94	0.95	2	2.50
	11:33		Middle	2.5	20.50	20.50		8.11	8.11		32.73	32.73		66.5	66.6		4.94	4.94		0.95	0.96		3	
15/12/14	15:10	Fine	Middle	3.0	20.30	20.30	20.25	8.12	8.12	8.12	32.60	32.60	32.61	74.2	74.8	74.6	5.54	5.58	5.57	0.48	0.50	0.52	3	2.50
	15:12		Middle	3.0	20.20	20.20		8.12	8.12		32.61	32.61		75.1	74.4		5.60	5.55		0.51	0.58		2	
17/12/14	14:06	Fine	Middle	3.0	19.30	19.30	19.30	8.16	8.17	8.16	32.03	32.03	32.05	73.0	73.3	73.4	5.57	5.59	5.60	3.30	3.28	3.25	<2	<2
	14:08		Middle	3.0	19.30	19.30		8.16	8.16		32.07	32.07		73.4	73.7		5.60	5.62		3.21	3.20		<2	
19/12/14	15:26	Cloudy	Middle	2.5	18.80	18.80	18.75	8.16	8.16	8.17	32.45	32.45	32.45	69.7	69.0	68.5	5.31	5.26	5.27	0.50	0.50	0.51	<2	<2
	15:28		Middle	2.5	18.70	18.70		8.17	8.17		32.45	32.45		67.7	67.5		5.26	5.25		0.51	0.51		<2	
22/12/14	9:43	Fine	Middle	3.0	17.90	17.90	17.80	8.16	8.16	8.17	32.78	32.78	32.78	70.4	70.4	70.3	5.49	5.47	5.47	1.04	1.03	1.00	<2	<2
	9:45		Middle	3.0	17.70	17.70		8.18	8.18		32.78	32.78		70.2	70.3		5.46	5.47		0.98	0.95		<2	
24/12/14	10:50	Fine	Middle	2.5	18.60	18.60	18.65	8.16	8.16	8.16	32.24	32.24	32.25	73.4	72.8	72.6	5.66	5.61	5.59	1.01	1.02	1.04	<2	<2
	10:52		Middle	2.5	18.70	18.70		8.15	8.15		32.26	32.26		72.3	71.8		5.57	5.53		1.06	1.07		<2	
26/12/14	7:56	Cloudy	Middle	2.0	18.20	18.20	18.20	8.10	8.10	8.10	31.72	31.73	31.73	82.4	83.8	83.8	6.60	6.66	6.68	2.05	2.02	2.06	2	2.50
	7:57		Middle	2.0	18.20	18.20		8.10	8.10		31.73	31.73		84.5	84.6		6.72	6.73		2.07	2.09		3	

Remarks:
Single underline denotes exceedance over Action Level.
Double underline denotes exceedance over Limit Level.



**Water Monitoring Result at P3 - APA
Mid-Flood Tide**

Date	Time	Weather Condition	Sampling Depth		Water Temperature			pH			Salinity			DO Saturation		DO		Turbidity			Suspended Solids			
					°C			-			ppt			%		mg/L		NTU			mg/L			
			m	Value	Average	Value	Average	Value	Average	Value	Average	Value	Average	Value	Average	Value	Average	Value	Average	Value	Average	Value	Average	
28/11/14	11:00	Cloudy	Middle	2.5	23.60	23.60	23.60	8.15	8.15	8.16	32.83	32.83	32.81	80.8	81.1	81.0	5.68	5.70	5.74	3.91	3.64	3.68	5	4.00
	11:02		Middle	2.5	23.60	23.60		8.16	8.16		32.79	32.79		81.1	80.9		5.70	5.88		3.60	3.56		3	
1/12/14	14:56	Cloudy	Middle	2.5	23.10	23.10	23.00	8.09	8.09	8.09	32.18	32.18	32.19	72.5	72.9	72.7	5.16	5.19	5.18	3.97	3.97	3.97	6	6.00
	14:58		Middle	2.5	22.90	22.90		8.09	8.09		32.19	32.19		72.2	73.3		5.14	5.23		3.97	3.97		6	
3/12/14	15:22	Cloudy	Middle	3.0	22.30	22.30	22.25	8.11	8.11	8.13	32.46	32.46	32.51	63.1	62.3	61.8	4.55	4.49	4.46	1.92	1.92	1.93	3	3.00
	15:24		Middle	3.0	22.20	22.20		8.15	8.15		32.55	32.55		61.2	60.7		4.41	4.37		1.94	1.94		3	
5/12/14	16:52	Fine	Middle	3.0	21.50	21.50	21.45	8.09	8.09	8.14	32.60	32.60	32.59	64.3	63.0	62.2	4.70	4.60	4.54	1.31	1.31	1.32	3	3.00
	16:54		Middle	3.0	21.40	21.40		8.18	8.18		32.58	32.58		60.8	60.6		4.44	4.43		1.32	1.33		3	
8/12/14	8:36	Fine	Middle	2.5	20.80	20.80	20.80	8.14	8.14	8.16	32.63	32.63	32.67	65.2	63.9	63.4	4.81	4.72	4.68	2.03	1.98	1.97	4	3.50
	8:38		Middle	2.5	20.80	20.80		8.18	8.18		32.71	32.71		62.2	62.3		4.59	4.60		1.94	1.92		3	
10/12/14	9:09	Cloudy	Middle	2.5	21.00	21.00	20.95	8.17	8.17	8.18	32.75	32.75	32.74	63.9	64.1	64.3	4.70	4.73	4.73	1.38	1.33	1.35	3	3.50
	9:11		Middle	2.5	20.90	20.90		8.18	8.18		32.73	32.73		64.1	64.9		4.72	4.77		1.36	1.34		4	
12/12/14	11:23	Fine	Middle	2.5	20.60	20.60	20.55	8.08	8.08	8.11	32.70	32.70	32.70	69.8	70.0	69.3	5.19	5.17	5.12	1.67	1.68	1.69	2	2.00
	11:25		Middle	2.5	20.50	20.50		8.14	8.14		32.70	32.70		68.6	68.6		5.08	5.05		1.71	1.71		2	
15/12/14	15:05	Fine	Middle	3.0	20.20	20.20	20.20	8.13	8.13	8.13	32.63	32.63	32.64	76.7	77.1	77.2	5.73	5.76	5.77	0.68	0.68	0.68	3	3.50
	15:07		Middle	3.0	20.20	20.20		8.13	8.13		32.65	32.65		77.4	77.4		5.79	5.78		0.68	0.67		4	
17/12/14	14:11	Fine	Middle	3.0	19.40	19.40	19.30	8.17	8.17	8.18	32.00	32.00	32.04	81.9	81.8	81.4	6.25	6.24	6.22	3.52	3.53	3.54	<2	<2
	14:13		Middle	3.0	19.20	19.20		8.19	8.19		32.07	32.07		81.2	80.8		6.20	6.17		3.55	3.56		<2	
19/12/14	15:15	Cloudy	Middle	2.5	18.60	18.70	18.58	8.17	8.17	8.18	32.39	32.39	32.40	71.4	71.2	70.9	5.51	5.49	5.47	0.74	0.73	0.73	<2	2.00
	15:17		Middle	2.5	18.50	18.50		8.19	8.19		32.40	32.40		70.9	70.1		5.47	5.41		0.72	0.73		2	
22/12/14	9:34	Fine	Middle	3.0	17.80	17.80	17.75	8.16	8.16	8.17	32.41	32.41	32.37	71.7	70.4	69.0	5.62	5.52	5.41	0.74	0.75	0.77	<2	<2
	9:36		Middle	3.0	17.70	17.70		8.18	8.18		32.32	32.32		67.4	66.4		5.29	5.20		0.77	0.80		<2	
24/12/14	10:41	Fine	Middle	2.5	18.60	18.60	18.60	8.15	8.15	8.15	32.24	32.24	32.26	71.8	71.2	71.9	5.54	5.52	5.55	1.22	1.23	1.24	3	2.50
	10:43		Middle	2.5	18.60	18.60		8.14	8.14		32.27	32.27		73.3	71.4		5.65	5.50		1.24	1.25		2	
26/12/14	8:06	Cloudy	Middle	2.0	18.10	18.10	18.10	8.11	8.11	8.11	31.74	31.74	31.74	85.0	85.2	84.5	6.77	6.79	6.73	2.61	2.69	2.69	3	3.00
	8:07		Middle	2.0	18.10	18.10		8.11	8.11		31.74	31.74		83.4	84.4		6.64	6.72		2.72	2.74		3	

Remarks:
 Single underline denotes exceedance over Action Level.
 Double underline denotes exceedance over Limit Level.



**Water Monitoring Result at P4 - SOC
Mid-Flood Tide**

Date	Time	Weather Condition	Sampling Depth		Water Temperature			pH			Salinity			DO Saturation		DO		Turbidity		Suspended Solids				
					°C			-			ppt			%		mg/L		NTU		mg/L				
			m	Value	Average	Value	Average	Value	Average	Value	Average	Value	Average	Value	Average	Value	Average	Value	Average	Value	Average			
28/11/14	10:56	Cloudy	Middle	2.5	23.60	23.60	23.55	8.16	8.16	8.16	32.84	32.84	32.86	76.3	78.2	79.9	5.36	5.50	5.62	4.22	4.23	4.30	6	5.50
	10:58		Middle	2.5	23.50	23.50		8.16	8.16		32.87	32.87		82.0	82.9		5.77	5.83		4.26	4.50		5	
1/12/14	14:50	Cloudy	Middle	2.5	22.90	22.90	22.85	8.10	8.10	8.10	32.19	32.19	32.20	77.8	77.7	77.8	5.55	5.54	5.55	3.77	3.65	3.55	18	18.50
	14:52		Middle	2.5	22.80	22.80		8.10	8.10		32.20	32.20		77.6	78.0		5.55	5.57		3.18	3.60		19	
3/12/14	15:14	Cloudy	Middle	3.0	22.30	22.30	22.30	8.15	8.15	8.16	32.49	32.49	32.55	62.8	62.1	61.7	4.52	4.47	4.44	1.40	1.36	1.37	3	3.00
	15:16		Middle	3.0	22.30	22.30		8.16	8.16		32.60	32.60		61.2	60.7		4.40	4.37		1.35	1.35		3	
5/12/14	16:46	Fine	Middle	3.0	21.60	21.60	21.55	8.17	8.17	8.17	32.58	32.58	32.59	64.0	63.3	63.0	4.67	4.62	4.59	1.29	1.26	1.26	2	2.00
	16:48		Middle	3.0	21.50	21.50		8.17	8.17		32.60	32.60		62.6	62.0		4.56	4.52		1.24	1.23		2	
8/12/14	8:28	Fine	Middle	2.5	20.70	20.70	20.65	8.16	8.16	8.18	32.74	32.74	32.74	67.1	65.4	65.1	4.97	4.84	4.82	3.16	3.30	3.30	3	3.50
	8:30		Middle	2.5	20.60	20.60		8.19	8.19		32.74	32.74		64.0	63.8		4.74	4.72		3.34	3.40		4	
10/12/14	8:59	Cloudy	Middle	2.5	20.50	20.50	20.60	8.15	8.15	8.17	32.34	32.34	32.41	68.5	67.1	66.8	5.07	4.97	4.94	2.26	2.27	2.29	3	3.50
	9:01		Middle	2.5	20.70	20.70		8.18	8.18		32.47	32.47		66.1	65.4		4.89	4.84		2.31	2.32		4	
12/12/14	11:13	Fine	Middle	3.0	20.50	20.50	20.50	8.06	8.06	8.10	32.57	32.57	32.60	62.6	61.7	61.2	4.65	4.58	4.55	2.60	2.59	2.58	5	4.50
	11:15		Middle	3.0	20.50	20.50		8.13	8.13		32.63	32.63		60.6	60.0		4.50	4.46		2.58	2.56		4	
15/12/14	15:00	Fine	Middle	3.0	20.20	20.20	20.15	8.10	8.10	8.12	32.57	32.57	32.58	82.7	82.9	83.0	6.62	6.65	6.71	1.05	1.07	1.03	2	2.50
	15:02		Middle	3.0	20.10	20.10		8.13	8.13		32.58	32.58		83.2	83.1		6.78	6.79		1.01	1.00		3	
17/12/14	14:16	Fine	Middle	3.0	18.80	18.80	18.70	8.19	8.19	8.20	32.03	32.03	32.04	84.7	84.2	84.3	6.53	6.50	6.50	3.03	3.04	3.03	<2	<2
	14:18		Middle	3.0	18.60	18.60		8.20	8.20		32.04	32.04		84.1	84.0		6.49	6.49		3.03	3.03		<2	
19/12/14	15:07	Cloudy	Middle	2.5	18.80	18.80	18.75	8.17	8.17	8.18	32.39	32.39	32.39	70.2	70.1	70.4	5.40	5.39	5.41	1.44	1.43	1.44	<2	2.00
	15:09		Middle	2.5	18.70	18.70		8.18	8.18		32.38	32.38		70.4	70.7		5.41	5.43		1.44	1.44		2	
22/12/14	9:25	Fine	Middle	3.0	18.00	18.00	17.90	8.17	8.17	8.18	32.34	32.34	32.36	71.0	70.1	70.3	5.63	5.48	5.52	1.23	1.24	1.25	<2	<2
	9:27		Middle	3.0	17.80	17.80		8.19	8.19		32.38	32.38		69.7	70.3		5.46	5.50		1.28	1.26		<2	
24/12/14	10:31	Fine	Middle	2.5	18.30	18.30	18.35	8.15	8.15	8.15	32.30	32.30	32.30	73.6	75.1	74.0	5.70	5.82	5.73	1.72	1.69	1.69	3	3.00
	10:33		Middle	2.5	18.40	18.40		8.15	8.15		32.29	32.29		74.0	73.2		5.73	5.68		1.69	1.67		3	
26/12/14	8:18	Cloudy	Middle	2.0	17.70	17.70	17.70	8.11	8.11	8.11	31.73	31.73	31.74	84.5	84.6	84.9	6.78	6.79	6.81	1.95	2.02	1.93	2	2.00
	8:19		Middle	2.0	17.70	17.70		8.11	8.11		31.74	31.74		85.1	85.3		6.83	6.85		1.93	1.80		2	

Remarks:
Single underline denotes exceedance over Action Level.
Double underline denotes exceedance over Limit Level.



**Water Monitoring Result at P5 - WCT / RT / IT
Mid-Flood Tide**

Date	Time	Weather Condition	Sampling Depth		Water Temperature			pH			Salinity			DO Saturation		DO		Turbidity		Suspended Solids				
					°C			-			ppt			%		mg/L		NTU		mg/L				
			m	Value	Average	Value	Average	Value	Average	Value	Average	Value	Average	Value	Average	Value	Average	Value	Average	Value	Average	Value	Average	
28/11/14	10:52	Cloudy	Middle	2.5	23.60	23.60	23.55	8.14	8.14	8.15	32.85	32.85	32.86	85.3	88.1	86.9	6.00	6.19	6.11	4.34	4.23	4.24	6	6.00
	10:54		Middle	2.5	23.50	23.50		8.16	8.16		32.86	32.86		87.8	86.2		6.17	6.06		4.21	4.17		6	
1/12/14	14:46	Cloudy	Middle	2.5	23.10	23.10	22.95	8.10	8.10	8.10	32.16	32.16	32.18	64.9	71.7	70.6	4.62	5.11	5.03	4.91	4.92	4.96	7	6.50
	14:48		Middle	2.5	22.80	22.80		8.10	8.10		32.20	32.20		73.1	72.6		5.22	5.18		5.00	5.01		6	
3/12/14	15:11	Cloudy	Middle	3.0	22.10	22.10	22.15	8.08	8.08	8.09	32.46	32.46	32.49	57.2	56.4	56.4	4.12	4.07	4.07	2.72	2.72	2.71	3	4.00
	15:13		Middle	3.0	22.20	22.20		8.09	8.09		32.52	32.52		56.1	56.0		4.05	4.04		2.71	2.70		5	
5/12/14	16:43	Fine	Middle	3.0	21.50	21.50	21.50	8.14	8.14	8.16	32.49	32.49	32.55	66.6	65.7	64.7	4.86	4.79	4.72	2.51	2.55	2.49	3	2.50
	16:45		Middle	3.0	21.50	21.50		8.17	8.17		32.61	32.61		63.7	62.6		4.65	4.57		2.42	2.46		2	
8/12/14	8:18	Fine	Middle	2.5	20.90	20.90	20.85	8.16	8.16	8.18	32.69	32.68	32.70	69.6	68.8	68.4	5.14	5.09	5.06	2.71	2.67	2.64	4	3.50
	8:20		Middle	2.5	20.80	20.80		8.19	8.19		32.71	32.71		68.0	67.3		5.03	4.97		2.62	2.56		3	
10/12/14	8:53	Cloudy	Middle	2.5	20.80	20.80	20.80	8.05	8.05	8.05	32.66	32.66	32.69	71.1	70.0	69.7	5.25	5.12	5.13	2.15	2.15	2.15	4	4.50
	8:55		Middle	2.5	20.80	20.80		8.05	8.05		32.72	32.72		68.9	68.6		5.09	5.07		2.15	2.15		5	
12/12/14	11:09	Fine	Middle	3.0	20.60	20.60	20.55	8.07	8.07	8.11	32.70	32.70	32.70	70.6	70.0	69.5	5.24	5.20	5.16	3.84	3.80	3.82	5	4.50
	11:11		Middle	3.0	20.50	20.50		8.14	8.14		32.70	32.70		68.6	68.6		5.10	5.10		3.81	3.82		4	
15/12/14	14:55	Fine	Middle	3.0	19.90	19.90	19.90	8.10	8.10	8.11	32.59	32.59	32.63	83.0	82.2	82.4	6.19	6.12	6.14	1.44	1.41	1.43	2	2.50
	14:57		Middle	3.0	19.90	19.90		8.12	8.12		32.66	32.66		82.1	82.1		6.12	6.12		1.43	1.43		3	
17/12/14	14:20	Fine	Middle	3.0	18.70	18.70	18.60	8.22	8.22	8.23	32.00	32.00	32.01	89.6	89.2	88.8	6.93	6.90	6.87	3.92	3.91	3.91	<2	<2
	14:22		Middle	3.0	18.50	18.50		8.24	8.24		32.01	32.01		88.7	87.6		6.86	6.78		3.91	3.91		<2	
19/12/14	15:03	Cloudy	Middle	2.5	18.70	18.70	18.70	8.17	8.17	8.18	32.31	32.31	32.33	71.8	71.1	71.4	5.52	5.47	5.49	0.98	0.97	0.97	4	4.00
	15:05		Middle	2.5	18.70	18.70		8.18	8.18		32.35	32.35		70.7	72.0		5.43	5.53		0.96	0.96		4	
22/12/14	9:19	Fine	Middle	3.0	17.80	17.80	17.75	8.10	8.10	8.14	32.27	32.27	32.28	69.0	69.0	69.0	5.40	5.41	5.41	1.06	1.05	1.04	<2	<2
	9:21		Middle	3.0	17.70	17.70		8.18	8.18		32.28	32.28		68.9	69.2		5.40	5.43		1.03	1.02		<2	
24/12/14	10:23	Fine	Middle	2.5	18.40	18.40	18.40	8.14	8.14	8.14	32.26	32.28	32.27	71.1	71.1	70.7	5.50	5.51	5.47	1.39	1.39	1.40	3	4.00
	10:25		Middle	2.5	18.40	18.40		8.14	8.14		32.27	32.27		70.4	70.0		5.45	5.43		1.41	1.42		5	
26/12/14	8:27	Cloudy	Middle	2.0	17.80	17.80	17.80	8.11	8.11	8.11	31.71	31.71	31.71	81.8	81.9	81.9	6.55	6.57	6.56	1.52	1.99	1.60	3	2.50
	8:28		Middle	2.0	17.80	17.80		8.11	8.11		31.71	31.71		82.1	81.6		6.58	6.53		1.48	1.39		2	

Remarks:
Single underline denotes exceedance over Action Level.
Double underline denotes exceedance over Limit Level.



**Water Monitoring Result at RW21-P789 - Sun Hung Kai Centre
Mid-Flood Tide**

Date	Time	Weather Condition	Sampling Depth		Water Temperature			pH			Salinity			DO Saturation		DO		Turbidity			Suspended Solids			
					°C		-		ppt		%		mg/L		NTU		mg/L							
			m	Value	Average	Value	Average	Value	Average	Value	Average	Value	Average	Value	Average	Value	Average	Value	Average					
28/11/14	11:34	Cloudy	Middle	3.5	23.90	23.90	23.95	8.15	8.15	8.16	32.83	32.83	32.83	93.1	92.0	90.3	6.50	6.42	6.30	4.45	4.43	4.43	5	5.50
	11:36		Middle	3.5	24.00	24.00		8.17	8.17		32.83	32.83		89.5	86.5		6.25	6.04		4.42	4.41		6	
1/12/14	15:35	Cloudy	Middle	3.5	22.60	22.60	22.55	8.10	8.10	8.10	32.18	32.18	32.19	79.4	80.5	79.8	5.72	5.78	5.74	5.72	5.56	5.55	6	6.50
	15:37		Middle	3.5	22.50	22.50		8.10	8.10		32.19	32.19		79.5	79.6		5.72	5.73		5.53	5.40		7	
3/12/14	15:40	Cloudy	Middle	3.0	22.20	22.20	22.15	8.18	8.18	8.18	32.10	32.10	32.11	85.0	85.2	84.8	6.15	6.17	6.14	5.02	5.02	5.03	3	4.00
	15:42		Middle	3.0	22.10	22.10		8.17	8.17		32.11	32.11		84.7	84.3		6.13	6.10		5.03	5.04		5	
5/12/14	16:50	Fine	Middle	3.5	21.20	21.20	21.20	8.21	8.21	8.21	32.13	32.13	32.14	81.1	81.2	81.2	5.98	5.99	5.99	5.10	5.11	5.10	4	4.50
	16:52		Middle	3.5	21.20	21.20		8.21	8.21		32.14	32.14		80.8	81.8		5.96	6.04		5.09	5.08		5	
8/12/14	10:35	Fine	Middle	3.5	21.00	21.00	21.00	8.16	8.16	8.17	32.12	32.12	32.13	79.1	81.0	80.1	5.84	5.99	5.92	4.23	4.25	4.25	6	6.00
	10:37		Middle	3.5	21.00	21.00		8.18	8.18		32.13	32.13		81.3	78.8		6.01	5.83		4.25	4.26		6	
10/12/14	8:50	Cloudy	Middle	3.0	20.70	20.70	20.60	8.15	8.15	8.17	32.25	32.25	32.26	85.9	85.2	85.3	6.39	6.33	6.34	3.17	3.16	3.16	3	4.00
	8:52		Middle	3.0	20.50	20.50		8.19	8.19		32.26	32.26		85.0	85.2		6.32	6.33		3.16	3.16		5	
12/12/14	9:30	Fine	Middle	3.0	19.40	19.40	19.25	8.19	8.19	8.20	32.24	32.24	32.25	83.2	83.1	83.1	6.34	6.34	6.34	5.18	5.19	5.21	4	4.00
	9:32		Middle	3.0	19.10	19.10		8.20	8.20		32.26	32.26		82.9	83.1		6.33	6.34		5.22	5.23		4	
15/12/14	11:40	Fine	Middle	3.0	20.30	20.30	20.30	8.18	8.18	8.18	32.03	32.03	32.04	81.6	81.6	81.9	6.11	6.11	6.13	3.67	3.42	3.57	2	2.50
	11:42		Middle	3.0	20.30	20.30		8.17	8.17		32.04	32.04		82.1	82.3		6.14	6.15		3.58	3.59		3	
17/12/14	14:35	Fine	Middle	3.5	19.10	19.10	19.10	8.24	8.24	8.25	31.98	31.98	32.00	88.2	88.6	88.6	6.76	6.79	6.79	3.07	3.06	3.06	<2	<u>≤2</u>
	14:37		Middle	3.5	19.10	19.10		8.26	8.26		32.01	32.01		88.5	89.2		6.78	6.83		3.05	3.05		<2	
19/12/14	14:50	Cloudy	Middle	3.0	18.40	18.40	18.35	8.25	8.25	8.26	31.64	31.64	31.67	81.5	81.8	82.1	6.34	6.37	6.39	4.52	4.49	4.48	5	4.50
	14:52		Middle	3.0	18.30	18.30		8.26	8.26		31.69	31.69		82.1	82.8		6.39	6.45		4.44	4.46		4	
22/12/14	6:47	Fine	Middle	3.0	16.40	16.40	16.20	8.26	8.26	8.26	31.81	31.81	31.82	81.6	81.5	81.8	6.61	6.61	6.63	4.86	4.99	4.96	<2	<u>≤2</u>
	6:48		Middle	3.0	16.00	16.00		8.26	8.26		31.83	31.83		81.9	82.1		6.64	6.67		4.99	5.01		<2	
24/12/14	7:02	Fine	Middle	3.0	17.60	17.60	17.60	8.23	8.23	8.23	31.92	31.92	31.93	81.4	82.7	82.4	6.41	6.52	6.50	4.44	4.46	4.47	3	3.50
	7:04		Middle	3.0	17.60	17.60		8.23	8.23		31.93	31.93		83.0	82.5		6.54	6.51		4.47	4.50		4	
26/12/14	8:58	Cloudy	Middle	3.0	18.00	18.00	18.00	8.13	8.13	8.12	31.73	31.73	31.73	83.4	83.5	83.6	6.65	6.66	6.66	1.56	1.59	1.56	3	3.00
	8:59		Middle	3.0	18.00	18.00		8.11	8.11		31.72	31.72		83.8	83.6		6.66	6.67		1.57	1.53		3	

Remarks:
Single underline denotes exceedance over Action Level.
Double underline denotes exceedance over Limit Level.



**Water Monitoring Result at WSD19 - Sheung Wan
Mid-Flood Tide**

Date	Time	Weather Condition	Sampling Depth		Water Temperature			pH			Salinity			DO Saturation		DO		Turbidity		Suspended Solids				
					°C			-			ppt			%		mg/L		NTU		mg/L				
			m	Value	Average	Value	Average	Value	Average	Value	Average	Value	Average	Value	Average	Value	Average	Value	Average	Value	Average	Value	Average	
28/11/14	9:57	Cloudy	Middle	3.0	23.90	23.90	23.85	8.05	8.05	8.07	32.97	32.97	32.94	70.6	72.2	73.4	4.94	5.04	5.13	4.54	4.40	4.44	5	5.50
	9:59		Middle	3.0	23.80	23.80		8.08	8.08		32.90	32.90		74.9	76.0		5.23	5.31		4.40	4.40		6	
1/12/14	13:50	Cloudy	Middle	3.0	22.60	22.60	22.55	8.16	8.16	8.15	32.39	32.39	32.40	80.8	81.0	80.8	5.79	5.81	5.80	4.40	4.33	4.45	5	4.50
	13:52		Middle	3.0	22.50	22.50		8.13	8.13		32.41	32.41		81.1	80.4		5.82	5.77		4.46	4.61		4	
3/12/14	14:34	Cloudy	Middle	3.0	21.80	21.80	21.75	8.14	8.14	8.14	32.19	32.19	32.20	78.7	79.8	79.7	5.73	5.82	5.81	4.86	4.84	4.83	5	4.50
	14:36		Middle	3.0	21.70	21.70		8.13	8.13		32.20	32.20		80.3	79.9		5.85	5.83		4.81	4.80		4	
5/12/14	15:35	Fine	Middle	3.5	21.00	21.00	20.90	8.23	8.23	8.22	32.10	32.10	32.11	81.0	80.7	80.5	5.99	5.97	5.96	4.29	4.26	4.29	5	4.00
	15:37		Middle	3.5	20.80	20.80		8.21	8.21		32.12	32.12		81.3	79.0		6.02	5.85		4.28	4.31		3	
8/12/14	-	Fine	Middle	-	-	-	#DIV/0!	-	-	#DIV/0!	-	-	#DIV/0!	-	-	#DIV/0!	-	-	#DIV/0!	-	-	#DIV/0!	-	#DIV/0!
	-		Middle	-	-	-		-	-		-	-		-	-		-	-		-	-		-	
10/12/14	8:00	Cloudy	Middle	3.0	20.80	20.80	20.75	8.20	8.20	8.20	32.34	32.34	32.35	78.1	77.4	77.4	5.79	5.73	5.74	4.01	3.98	3.98	5	4.50
	8:02		Middle	3.0	20.70	20.70		8.19	8.19		32.36	32.36		76.5	77.5		5.67	5.75		3.98	3.96		4	
12/12/14	10:25	Fine	Middle	3.5	19.60	19.60	19.40	8.17	8.17	8.17	32.19	32.19	32.20	77.5	77.1	77.2	5.92	5.88	5.89	6.11	6.11	6.10	4	5.00
	10:27		Middle	3.5	19.20	19.20		8.17	8.17		32.21	32.21		76.9	77.2		5.86	5.88		6.10	6.08		6	
15/12/14	12:30	Fine	Middle	3.0	20.10	20.10	20.10	8.14	8.14	8.14	32.04	32.04	32.04	94.7	93.0	93.4	7.11	7.01	7.02	4.31	4.64	4.55	3	3.00
	12:32		Middle	3.0	20.10	20.10		8.14	8.14		32.04	32.04		93.0	92.7		6.99	6.96		4.64	4.59		3	
17/12/14	11:30	Fine	Middle	3.0	18.20	18.20	18.10	8.21	8.21	8.22	32.10	32.10	32.11	80.8	81.1	81.5	6.30	6.33	6.36	7.01	6.99	7.11	<2	2.00
	11:32		Middle	3.0	18.00	18.00		8.23	8.23		32.12	32.12		81.7	82.3		6.38	6.42		7.18	7.25		2	
19/12/14	15:52	Cloudy	Middle	3.0	18.40	18.40	18.30	8.16	8.16	8.19	31.83	31.83	31.85	78.7	79.0	78.1	6.12	6.14	6.07	3.43	3.42	3.40	2	2.00
	15:54		Middle	3.0	18.20	18.20		8.22	8.22		31.87	31.87		78.1	76.6		6.07	5.96		3.38	3.35		<2	
22/12/14	8:20	Fine	Middle	3.0	16.90	16.90	16.70	8.26	8.26	8.26	31.76	31.76	31.80	80.7	80.5	80.9	6.46	6.45	6.49	7.94	7.99	7.97	2	13.50
	8:22		Middle	3.0	16.50	16.50		8.26	8.26		31.84	31.84		81.0	81.3		6.51	6.53		7.98	7.97		25	
24/12/14	10:20	Fine	Middle	3.0	18.60	18.60	18.60	8.21	8.21	8.22	31.76	31.76	31.75	84.1	84.7	84.3	6.52	6.56	6.53	4.14	4.04	4.05	4	3.00
	10:22		Middle	3.0	18.60	18.60		8.23	8.23		31.74	31.74		84.6	83.9		6.55	6.50		4.01	4.00		2	
26/12/14	7:13	Cloudy	Middle	2.5	18.20	18.20	18.20	8.11	8.11	8.11	31.79	31.79	31.80	87.6	88.8	88.7	6.98	7.08	7.06	3.99	4.02	3.95	2	2.00
	7:14		Middle	2.5	18.20	18.20		8.11	8.11		31.80	31.80		89.2	89.0		7.09	7.07		3.88	3.91		2	

Remarks:
 Single underline denotes exceedance over Action Level.
 Double underline denotes exceedance over Limit Level.



**Water Monitoring Result at C7 - Windsor House
Mid-Ebb Tide**

Date	Time	Weather Condition	Sampling Depth		Water Temperature		pH			Salinity		DO Saturation		DO		Turbidity		Suspended Solids					
					°C		-		ppt		%		mg/L		NTU		mg/L						
			m		Value	Average	Value	Average	Value	Average	Value	Average	Value	Average	Value	Average	Value	Average	Value	Average			
22/12/14	23:18	Cloudy	-	-	15.30	15.30	8.02	8.02	8.03	31.45	31.48	31.48	88.0	88.1	88.2	7.27	7.29	7.30	1.79	1.71	1.70	2	2.00
	23:19		-	-	15.30	15.30	15.30	8.03	8.03	8.03	31.49	31.49	31.48	88.3	88.4	88.2	7.30	7.32	7.30	1.67	1.64	1.70	2
24/12/14	0:12	Cloudy	-	-	17.40	17.40	7.77	7.77	7.78	31.58	31.58	31.58	92.8	92.5	92.3	7.35	7.33	7.30	1.61	1.52	1.55	<2	<2
	0:13		-	-	17.40	17.40	17.40	7.79	7.79	7.78	31.57	31.57	31.58	92.2	91.8	92.3	7.30	7.27	7.30	1.50	1.56	1.55	<2
26/12/14	2:50	Cloudy	-	-	17.30	17.30	8.06	8.06	8.07	31.69	31.69	31.68	93.2	93.0	92.5	7.39	7.38	7.33	3.25	3.27	3.22	2	2.00
	2:51		-	-	17.30	17.30	17.30	8.07	8.07	8.07	31.67	31.67	31.68	91.6	92.0	92.5	7.25	7.29	7.33	3.23	3.11	3.22	2

Remarks:
Single underline denotes exceedance over Action Level.
Double underline denotes exceedance over Limit Level.



**Water Monitoring Result at C1 - HKCEC
Mid-Ebb Tide**

Date	Time	Weather Condition	Sampling Depth		Water Temperature			pH			Salinity		DO Saturation		DO		Turbidity		Suspended Solids					
					°C		-		ppt		%		mg/L		NTU		mg/L							
					Value	Average	Value	Average	Value	Average	Value	Average	Value	Average	Value	Average	Value	Average	Value	Average				
28/11/14	4:20	Cloudy	Middle	2.5	23.04	23.04	23.04	8.01	8.01	8.02	31.84	31.84	31.86	91.6	89.7	88.6	6.87	6.73	6.64	2.40	2.38	2.49	5	4.50
	4:21		Middle	2.5	23.04	23.04		8.02	8.02		31.88	31.88		87.0	86.0		6.52	6.45		2.46	2.70		4	
1/12/14	20:13	Cloudy	Middle	2.5	22.10	22.10	22.10	7.93	7.93	7.92	31.97	31.97	31.97	82.5	83.0	83.1	5.98	6.02	6.03	4.18	4.13	4.10	4	4.00
	20:14		Middle	2.5	22.10	22.10		7.91	7.91		31.97	31.97		83.1	83.8		6.03	6.08		4.06	4.04		4	
3/12/14	10:35	Cloudy	Middle	2.5	22.20	22.20	22.10	8.03	8.05	8.05	32.85	32.85	32.86	62.1	60.5	60.2	4.52	4.41	4.38	3.52	3.52	3.54	3	3.50
	10:37		Middle	2.5	22.00	22.00		8.05	8.05		32.86	32.86		59.5	58.7		4.33	4.27		3.50	3.62		4	
5/12/14	11:05	Cloudy	Middle	3.0	21.60	21.60	21.50	8.24	8.24	8.30	32.80	32.80	32.87	64.1	63.7	62.3	4.67	4.68	4.54	2.32	2.29	2.28	2	2.50
	11:07		Middle	3.0	21.40	21.40		8.36	8.36		32.94	32.94		61.2	60.0		4.42	4.37		2.27	2.22		3	
8/12/14	0:05	Cloudy	Middle	2.5	20.30	20.20	20.18	7.92	7.92	7.94	32.09	32.09	32.11	91.2	91.7	90.8	6.84	6.88	6.82	4.51	4.24	4.26	5	4.50
	0:06		Middle	2.5	20.10	20.10		7.95	7.95		32.12	32.12		90.1	90.3		6.77	6.79		4.12	4.16		4	
10/12/14	3:57	Cloudy	Middle	2.5	20.00	20.00	20.00	7.97	7.97	7.97	32.32	32.32	32.32	86.6	87.4	87.4	6.52	6.57	6.58	2.07	1.87	2.03	2	2.00
	3:58		Middle	2.5	20.00	20.00		7.97	7.97		32.32	32.32		87.7	88.0		6.59	6.62		2.26	1.90		2	
12/12/14	0:42	Cloudy	Middle	2.5	20.20	20.20	20.20	7.91	7.91	7.92	32.17	32.17	32.17	84.9	85.5	84.9	6.37	6.41	6.36	2.29	2.59	2.35	4	5.00
	0:43		Middle	2.5	20.20	20.20		7.92	7.92		32.17	32.17		84.8	84.2		6.36	6.31		2.28	2.25		6	
15/12/14	7:25	Cloudy	Middle	2.0	18.80	18.80	18.80	7.87	7.87	7.88	32.05	32.05	32.02	87.4	88.4	86.8	8.11	8.21	8.05	1.78	1.76	1.84	2	2.50
	7:26		Middle	2.0	18.80	18.80		7.88	7.88		31.98	31.98		85.7	85.5		7.96	7.93		1.96	1.85		3	
17/12/14	22:10	Fine	Middle	2.5	16.20	16.20	16.20	8.11	8.11	8.11	32.02	32.02	32.03	92.4	91.6	91.6	7.48	7.41	7.41	2.03	2.00	1.92	<2	<2
	22:11		Middle	2.5	16.20	16.20		8.11	8.11		32.03	32.03		91.3	91.0		7.39	7.37		1.76	1.89		<2	
19/12/14	23:15	Cloudy	Middle	2.5	13.30	13.30	13.20	7.80	7.80	7.82	31.25	31.25	31.26	89.4	89.8	89.4	7.13	7.16	7.13	1.87	1.89	1.93	4	3.50
	23:16		Middle	2.5	13.10	13.10		7.84	7.84		31.26	31.26		89.6	88.9		7.15	7.09		2.01	1.94		3	
22/12/14	3:05	Cloudy	Middle	2.0	15.90	15.90	15.90	8.06	8.06	8.07	30.76	30.76	30.76	79.0	79.5	79.1	6.49	6.53	6.50	2.99	2.74	2.86	<2	<2
	3:06		Middle	2.0	15.90	15.90		8.07	8.07		30.76	30.76		78.9	78.8		6.48	6.48		2.89	2.80		<2	
24/12/14	4:11	Cloudy	Middle	2.0	17.90	17.90	17.90	7.95	7.95	7.96	31.69	31.69	31.66	84.2	85.9	84.9	6.61	6.75	6.67	2.14	2.40	2.24	4	4.00
	4:12		Middle	2.0	17.90	17.90		7.96	7.96		31.63	31.63		84.9	84.7		6.66	6.66		2.16	2.26		4	
26/12/14	4:40	Cloudy	Middle	2.0	17.10	17.10	17.10	8.01	8.01	8.02	31.56	31.56	31.57	84.7	84.8	85.1	6.75	6.77	6.78	2.48	2.39	2.42	2	2.00
	4:41		Middle	2.0	17.10	17.10		8.02	8.02		31.58	31.58		85.6	85.1		6.82	6.78		2.37	2.42		2	

Remarks:
Single underline denotes exceedance over Action Level.
Double underline denotes exceedance over Limit Level.



**Water Monitoring Result at P1 - HKCEC Phase I
Mid-Ebb Tide**

Date	Time	Weather Condition	Sampling Depth		Water Temperature		pH			Salinity		DO Saturation		DO		Turbidity		Suspended Solids						
					°C		-			ppt		%		mg/L		NTU		mg/L						
			m	Value	Average	Value	Average	Value	Average	Value	Average	Value	Average	Value	Average	Value	Average	Value	Average					
28/11/14	3:42	Cloudy	Middle	2.5	22.90	22.90	22.90	8.10	8.10	8.12	32.00	32.00	32.05	93.3	93.6	93.7	6.66	6.68	6.69	2.35	2.20	2.37	5	4.00
	3:43		Middle	2.5	22.90	22.90		8.13	8.13		32.09	32.09		93.8	93.9		6.70	6.71		2.75	2.18		3	
1/12/14	19:40	Cloudy	Middle	2.5	21.50	21.50	21.50	7.90	7.90	7.91	32.02	32.02	32.02	84.0	84.8	84.1	6.15	6.29	6.18	4.02	3.99	4.02	6	6.00
	19:41		Middle	2.5	21.50	21.50		7.91	7.91		32.02	32.02		84.0	83.4		6.15	6.14		4.06	4.00		6	
3/12/14	11:06	Cloudy	Middle	2.5	22.30	22.30	22.25	8.13	8.13	8.15	32.61	32.61	32.65	68.3	67.0	66.1	4.92	4.83	4.76	2.10	2.08	2.06	3	4.00
	11:08		Middle	2.5	22.20	22.20		8.16	8.16		32.68	32.68		65.3	63.7		4.70	4.58		2.04	2.02		5	
5/12/14	11:29	Cloudy	Middle	3.0	21.50	21.50	21.40	8.23	8.23	8.24	32.49	32.49	32.58	69.1	68.5	67.8	5.05	5.01	4.96	2.35	2.41	2.44	3	3.50
	11:31		Middle	3.0	21.30	21.30		8.25	8.25		32.67	32.67		67.3	66.3		4.93	4.85		2.49	2.50		4	
8/12/14	23:25	Cloudy	Middle	2.5	19.70	19.70	19.70	8.03	8.03	8.04	32.28	32.28	32.28	91.2	91.4	91.7	6.90	6.91	6.94	2.63	2.61	2.71	<2	2.00
	23:26		Middle	2.5	19.70	19.70		8.04	8.04		32.28	32.28		91.9	92.2		6.95	6.98		2.86	2.75		2	
10/12/14	3:21	Cloudy	Middle	2.5	19.80	19.80	19.80	8.01	8.01	8.01	32.22	32.22	32.23	88.2	88.6	88.0	6.65	6.67	6.64	2.33	2.62	2.51	4	4.00
	3:22		Middle	2.5	19.80	19.80		8.01	8.01		32.23	32.23		88.0	87.3		6.63	6.62		2.57	2.50		4	
12/12/14	0:08	Cloudy	Middle	2.5	20.00	19.80	19.80	7.96	7.96	7.96	32.12	32.12	32.12	85.0	84.9	85.3	6.43	6.42	6.44	2.74	2.72	2.81	3	2.50
	0:09		Middle	2.5	19.70	19.70		7.96	7.96		32.12	32.12		85.5	85.6		6.45	6.47		2.94	2.83		2	
15/12/14	7:59	Cloudy	Middle	2.0	19.20	19.20	19.10	7.77	7.77	7.77	31.80	31.80	31.82	82.5	86.0	85.0	7.64	7.96	7.87	2.49	2.47	2.45	3	3.50
	8:00		Middle	2.0	19.00	19.00		7.77	7.77		31.84	31.84		85.4	86.0		7.91	7.96		2.40	2.45		4	
17/12/14	21:31	Fine	Middle	2.5	16.00	16.00	16.00	8.09	8.09	8.09	32.03	32.03	32.04	90.0	89.8	89.7	7.31	7.30	7.29	1.81	1.91	1.81	2	2.00
	21:32		Middle	2.5	16.00	16.00		8.09	8.09		32.04	32.04		89.6	89.4		7.29	7.27		1.72	1.79		<2	
19/12/14	22:30	Cloudy	Middle	2.5	12.80	12.80	12.75	7.92	7.92	7.93	31.54	31.60	31.59	90.4	90.7	90.8	7.25	7.28	7.28	1.63	1.61	1.59	3	3.50
	22:31		Middle	2.5	12.70	12.70		7.94	7.94		31.60	31.60		90.9	91.1		7.29	7.31		1.53	1.58		4	
22/12/14	2:29	Cloudy	Middle	2.0	15.30	15.30	15.30	8.03	8.03	8.04	31.66	31.66	31.66	81.4	81.5	81.6	6.71	6.72	6.73	2.46	2.05	2.15	<2	<2
	2:30		Middle	2.0	15.30	15.30		8.04	8.04		31.65	31.65		81.7	81.6		6.75	6.74		1.97	2.11		<2	
24/12/14	3:29	Cloudy	Middle	2.0	17.70	17.70	17.65	7.98	7.98	7.98	31.65	31.65	31.68	85.2	85.3	85.6	6.72	6.73	6.76	2.23	2.39	2.21	2	2.50
	3:30		Middle	2.0	17.60	17.60		7.98	7.98		31.71	31.70		86.0	86.0		6.79	6.79		2.13	2.10		3	
26/12/14	3:55	Cloudy	Middle	2.0	16.80	16.80	16.80	8.06	8.06	8.06	31.73	31.73	31.73	86.2	86.7	86.9	6.91	6.95	6.96	2.38	2.59	2.69	2	2.50
	3:56		Middle	2.0	16.80	16.80		8.06	8.06		31.73	31.73		87.3	87.4		6.99	7.00		2.88	2.90		3	

Remarks:
Single underline denotes exceedance over Action Level.
Double underline denotes exceedance over Limit Level.



**Water Monitoring Result at P3 - APA
Mid-Ebb Tide**

Date	Time	Weather Condition	Sampling Depth		Water Temperature		pH			Salinity			DO Saturation		DO		Turbidity		Suspended Solids					
					°C		-			ppt			%		mg/L		NTU		mg/L					
					Value	Average	Value	Average	Value	Average	Value	Average	Value	Average	Value	Average	Value	Average	Value	Average				
28/11/14	3:51	Cloudy	Middle	2.5	22.97	22.97	22.97	8.07	8.07	8.08	31.97	31.98	32.01	93.7	93.8	94.1	6.69	6.70	6.72	1.76	1.78	1.75	4	4.00
	3:52		Middle	2.5	22.97	22.97		8.10	8.09		32.04	32.04		94.4	94.5		6.74	6.74		1.74	1.72		4	
1/12/14	19:49	Cloudy	Middle	2.5	22.00	22.00	21.98	7.95	7.95	7.96	32.04	32.04	32.04	84.3	84.6	84.5	6.12	6.15	6.14	3.40	3.25	3.30	3	3.00
	19:50		Middle	2.5	21.90	22.00		7.96	7.96		32.04	32.04		84.7	84.4		6.15	6.13		3.26	3.28		3	
3/12/14	10:58	Cloudy	Middle	2.5	22.40	22.40	22.30	8.05	8.05	8.06	32.53	32.53	32.55	66.0	66.3	67.0	4.75	4.77	4.82	2.10	2.08	2.11	4	4.00
	11:00		Middle	2.5	22.20	22.20		8.07	8.07		32.56	32.56		68.1	67.4		4.90	4.85		2.11	2.13		4	
5/12/14	11:22	Cloudy	Middle	3.0	21.50	21.50	21.45	8.24	8.25	8.26	32.53	32.52	32.57	64.2	63.7	63.4	4.69	4.65	4.63	2.98	3.05	3.02	3	3.50
	11:24		Middle	3.0	21.40	21.40		8.27	8.27		32.61	32.61		63.1	62.6		4.61	4.58		3.00	3.03		4	
8/12/14	23:33	Cloudy	Middle	2.5	20.00	20.00	19.98	8.00	8.00	8.01	32.27	32.27	32.28	94.7	94.9	94.0	7.12	7.14	7.07	2.89	2.90	2.99	4	4.00
	23:34		Middle	2.5	19.90	20.00		8.01	8.01		32.28	32.28		92.8	93.4		6.99	7.04		3.06	3.11		4	
10/12/14	3:27	Cloudy	Middle	2.5	19.90	19.90	19.90	7.99	7.99	7.99	32.23	32.23	32.23	88.3	87.7	88.3	6.65	6.60	6.64	2.00	2.06	2.18	2	2.50
	3:28		Middle	2.5	19.90	19.90		7.99	7.99		32.23	32.23		88.6	88.6		6.66	6.66		2.38	2.28		3	
12/12/14	0:13	Cloudy	Middle	2.5	20.20	20.10	20.13	7.77	7.77	7.78	31.91	31.91	31.92	86.5	86.8	86.6	6.50	6.52	6.51	2.80	2.72	2.72	3	4.00
	0:14		Middle	2.5	20.10	20.10		7.79	7.79		31.93	31.93		86.6	86.5		6.52	6.51		2.69	2.66		5	
15/12/14	7:52	Cloudy	Middle	2.0	18.90	18.90	18.90	7.74	7.74	7.74	31.86	31.86	31.86	89.6	91.0	90.4	7.88	8.04	8.00	2.11	2.08	2.01	2	2.50
	7:53		Middle	2.0	18.90	18.90		7.74	7.74		31.86	31.86		90.7	90.4		8.06	8.00		1.97	1.87		3	
17/12/14	21:38	Fine	Middle	2.5	16.00	16.00	16.00	8.11	8.11	8.12	32.01	32.01	31.95	85.5	85.4	85.4	6.96	6.96	6.94	1.40	1.46	1.35	<2	<2
	21:39		Middle	2.5	16.00	16.00		8.12	8.12		31.88	31.88		85.6	84.9		6.96	6.89		1.23	1.31		<2	
19/12/14	22:44	Cloudy	Middle	2.5	13.00	13.00	12.98	7.96	7.96	7.97	31.50	31.50	31.50	96.0	96.1	95.4	7.68	7.69	7.63	2.98	2.95	2.88	<2	2.00
	22:45		Middle	2.5	12.90	13.00		7.97	7.97		31.50	31.50		94.4	94.9		7.56	7.60		2.79	2.81		2	
22/12/14	2:37	Cloudy	Middle	2.0	15.90	15.90	15.85	7.99	7.99	7.99	31.17	31.17	31.17	79.1	78.7	78.9	6.49	6.45	6.47	2.75	2.73	2.71	<2	<2
	2:38		Middle	2.0	15.80	15.80		7.99	7.99		31.17	31.17		78.9	79.0		6.47	6.48		2.77	2.59		<2	
24/12/14	3:38	Cloudy	Middle	2.0	17.70	17.70	17.70	7.99	7.99	7.99	31.00	31.00	31.26	83.1	83.3	83.5	6.54	6.57	6.58	2.11	2.02	1.99	3	3.00
	3:39		Middle	2.0	17.70	17.70		7.99	7.99		31.41	31.63		83.8	83.9		6.61	6.61		1.97	1.84		3	
26/12/14	4:06	Cloudy	Middle	2.0	16.70	16.70	16.75	8.09	8.09	8.09	31.64	31.64	31.69	86.8	87.0	86.5	6.96	6.98	6.94	1.95	1.97	2.01	<2	<2
	4:07		Middle	2.0	16.80	16.80		8.09	8.09		31.73	31.73		85.1	86.9		6.82	6.98		2.11	1.99		<2	

Remarks:
Single underline denotes exceedance over Action Level.
Double underline denotes exceedance over Limit Level.



**Water Monitoring Result at P4 - SOC
Mid-Ebb Tide**

Date	Time	Weather Condition	Sampling Depth		Water Temperature			pH			Salinity			DO Saturation		DO		Turbidity		Suspended Solids				
					°C		-		ppt		%		mg/L		NTU		mg/L							
					Value	Average	Value	Average	Value	Average	Value	Average	Value	Average	Value	Average	Value	Average	Value	Average				
28/11/14	3:58	Cloudy	Middle	2.5	22.72	22.72	22.72	8.14	8.14	8.14	32.18	32.18	32.18	90.3	88.7	88.5	6.71	6.65	6.62	2.44	2.88	2.56	4	4.00
	3:59		Middle	2.5	22.72	22.72		8.14	8.14		32.18	32.18		88.0	86.8		6.60	6.51		2.51	2.39		4	
1/12/14	19:58	Cloudy	Middle	2.5	21.60	21.60	21.60	7.97	7.97	7.97	32.04	32.04	32.04	90.6	91.7	91.9	6.63	6.70	6.72	3.57	3.99	3.79	5	5.00
	19:59		Middle	2.5	21.60	21.60		7.97	7.97		32.04	32.04		92.6	92.8		6.77	6.79		3.82	3.78		5	
3/12/14	10:49	Cloudy	Middle	2.5	22.10	22.10	22.10	8.11	8.11	8.14	32.59	32.59	32.60	63.5	62.5	61.6	4.58	4.51	4.43	2.27	2.15	2.11	2	3.00
	10:51		Middle	2.5	22.10	22.10		8.16	8.16		32.60	32.60		61.0	59.5		4.36	4.26		2.03	1.98		4	
5/12/14	11:15	Cloudy	Middle	3.0	21.60	21.60	21.55	8.30	8.30	8.30	32.47	32.47	32.54	63.6	63.2	62.5	4.64	4.61	4.56	1.55	1.56	1.55	3	3.50
	11:17		Middle	3.0	21.50	21.50		8.30	8.30		32.61	32.61		62.2	61.1		4.54	4.46		1.56	1.54		4	
8/12/14	23:47	Cloudy	Middle	2.5	19.90	19.90	19.85	8.06	8.06	8.06	32.25	32.25	32.26	91.6	92.1	92.0	6.90	6.94	6.93	3.27	3.43	3.23	3	2.50
	23:48		Middle	2.5	19.80	19.80		8.06	8.06		32.27	32.27		92.5	91.7		6.97	6.91		3.14	3.06		2	
10/12/14	3:44	Cloudy	Middle	2.5	20.00	20.00	20.00	7.84	7.84	7.87	32.16	32.16	32.16	88.2	88.0	88.0	6.65	6.62	6.63	2.19	2.12	2.10	2	2.50
	3:45		Middle	2.5	20.00	20.00		7.90	7.89		32.16	32.16		88.1	87.8		6.63	6.61		2.01	2.09		3	
12/12/14	0:21	Cloudy	Middle	2.5	20.00	19.90	19.88	7.94	7.94	7.95	32.15	32.15	32.15	90.4	90.6	90.8	6.83	6.84	6.86	2.48	2.69	2.57	3	2.50
	0:22		Middle	2.5	19.80	19.80		7.95	7.95		32.15	32.15		91.1	91.0		6.88	6.87		2.50	2.59		2	
15/12/14	7:40	Cloudy	Middle	2.0	18.80	18.80	18.80	7.87	7.87	7.87	31.82	31.82	31.82	89.3	89.5	89.9	7.94	7.97	8.05	2.07	1.80	1.89	2	2.00
	7:41		Middle	2.0	18.80	18.80		7.87	7.87		31.81	31.81		90.1	90.5		8.11	8.18		1.82	1.86		<2	
17/12/14	21:43	Fine	Middle	2.5	16.20	16.20	16.20	8.07	8.07	8.07	31.98	31.98	31.97	92.5	92.3	91.5	7.49	7.47	7.43	1.89	1.99	1.94	<2	<2
	21:44		Middle	2.5	16.20	16.20		8.07	8.07		31.96	31.96		91.0	90.3		7.43	7.31		1.95	1.92		<2	
19/12/14	22:51	Cloudy	Middle	2.5	12.50	12.50	12.50	8.02	8.02	8.03	31.62	31.62	31.62	90.5	92.4	91.7	7.30	7.49	7.41	2.60	2.78	2.68	<2	3.00
	22:52		Middle	2.5	12.50	12.50		8.03	8.03		31.61	31.61		92.8	91.1		7.49	7.37		2.80	2.55		3	
22/12/14	2:49	Cloudy	Middle	2.0	15.50	15.50	15.50	8.07	8.07	8.08	31.01	31.01	31.01	80.3	80.6	80.5	6.63	6.66	6.65	2.49	2.45	2.48	<2	<2
	2:50		Middle	2.0	15.50	15.50		8.08	8.08		31.01	31.01		80.5	80.4		6.65	6.64		2.52	2.47		<2	
24/12/14	3:47	Cloudy	Middle	2.0	17.60	17.60	17.55	7.99	7.99	8.00	31.70	31.70	31.71	86.5	87.9	86.6	6.83	6.96	6.85	2.15	2.22	2.27	3	3.00
	3:48		Middle	2.0	17.50	17.50		8.00	8.00		31.71	31.71		86.1	85.9		6.80	6.79		2.30	2.40		3	
26/12/14	4:18	Cloudy	Middle	2.0	16.50	16.50	16.50	8.09	8.09	8.09	31.73	31.73	31.73	91.0	90.9	90.5	7.32	7.32	7.28	4.05	4.09	4.14	2	2.50
	4:19		Middle	2.0	16.50	16.50		8.08	8.08		31.72	31.72		90.0	90.2		7.24	7.25		4.18	4.24		3	

Remarks:
Single underline denotes exceedance over Action Level.
Double underline denotes exceedance over Limit Level.



**Water Monitoring Result at P5 - WCT / RT / IT
Mid-Ebb Tide**

Date	Time	Weather Condition	Sampling Depth		Water Temperature			pH			Salinity			DO Saturation		DO		Turbidity		Suspended Solids				
					°C			-			ppt			%		mg/L		NTU		mg/L				
					Value	Average		Value	Average		Value	Average		Value	Average		Value	Average	Value	Average	Value	Average	Value	Average
28/11/14	4:11	Cloudy	Middle	2.5	22.93	22.93	22.93	8.17	8.17	8.18	32.29	32.29	32.29	93.2	90.9	90.3	6.97	6.81	6.76	2.99	2.87	2.92	4	4.00
	4:12		Middle	2.5	22.93	22.93		8.18	8.18		32.29	32.29		89.2	87.7		6.68	6.57		2.89	2.91		4	
1/12/14	20:07	Cloudy	Middle	2.5	22.00	22.00	22.00	7.97	7.97	7.98	32.02	32.02	32.03	85.7	85.3	85.2	6.22	6.19	6.19	3.34	3.38	3.30	4	4.00
	20:08		Middle	2.5	22.00	22.00		7.98	7.98		32.04	32.04		84.8	85.0		6.16	6.17		3.30	3.19		4	
3/12/14	10:44	Cloudy	Middle	2.5	22.10	22.10	22.05	7.99	7.99	7.99	32.50	32.53	32.56	60.3	61.2	62.0	4.36	4.45	4.48	2.83	2.83	2.84	4	3.50
	10:46		Middle	2.5	22.00	22.00		7.99	7.99		32.60	32.60		63.4	63.2		4.58	4.54		2.84	2.85		3	
5/12/14	11:12	Cloudy	Middle	3.0	21.60	21.60	21.55	8.23	8.23	8.28	32.58	32.58	32.61	66.9	66.7	66.1	4.88	4.87	4.83	1.95	2.01	2.02	3	3.50
	11:14		Middle	3.0	21.50	21.50		8.33	8.33		32.63	32.63		66.0	64.8		4.82	4.73		2.07	2.05		4	
8/12/14	23:55	Cloudy	Middle	2.5	20.00	20.00	19.98	8.07	8.07	8.07	32.26	32.26	32.26	89.7	89.9	89.5	6.76	6.77	6.74	2.29	2.39	2.23	4	4.50
	23:56		Middle	2.5	19.90	20.00		8.07	8.07		32.26	32.26		89.5	89.0		6.74	6.70		2.14	2.11		5	
10/12/14	3:50	Cloudy	Middle	2.5	20.00	19.90	19.93	7.93	7.93	7.94	32.32	32.32	32.31	87.3	87.4	87.1	6.57	6.58	6.56	2.18	2.21	2.17	3	3.00
	3:51		Middle	2.5	19.90	19.90		7.94	7.94		32.29	32.32		86.0	87.5		6.48	6.60		2.12	2.16		3	
12/12/14	0:29	Cloudy	Middle	2.5	20.50	20.50	20.45	7.86	7.86	7.87	32.13	32.14	29.89	86.2	86.1	85.7	6.45	6.44	6.41	2.42	2.45	2.56	3	3.50
	0:30		Middle	2.5	20.40	20.40		7.87	7.87		32.14	23.14		85.3	85.2		6.38	6.37		2.68	2.70		4	
15/12/14	7:32	Cloudy	Middle	2.0	18.70	18.70	18.70	7.89	7.89	7.89	32.00	32.00	31.95	90.4	89.1	90.4	8.17	8.05	8.16	2.05	1.83	1.84	2	3.00
	7:33		Middle	2.0	18.70	18.70		7.89	7.89		31.89	31.89		90.9	91.3		8.19	8.24		1.69	1.77		4	
17/12/14	21:52	Fine	Middle	2.5	16.40	16.40	16.40	8.04	8.04	8.04	31.64	31.64	31.81	89.9	92.4	91.8	7.30	7.46	7.42	2.42	2.39	2.43	<2	<2
	21:53		Middle	2.5	16.40	16.40		8.04	8.04		31.97	31.97		92.4	92.6		7.46	7.47		2.48	2.41		<2	
19/12/14	23:03	Cloudy	Middle	2.5	13.00	13.00	12.90	8.03	8.03	8.04	31.62	31.62	31.62	89.9	89.8	90.2	7.20	7.19	7.23	2.51	2.61	2.61	3	2.50
	23:04		Middle	2.5	12.80	12.80		8.05	8.05		31.62	31.62		90.5	90.7		7.25	7.26		2.66	2.64		2	
22/12/14	2:55	Cloudy	Middle	2.0	16.00	16.00	15.98	7.91	7.91	7.92	30.61	30.68	30.69	76.0	76.5	76.6	6.24	6.28	6.29	2.68	2.64	2.56	<2	<2
	2:56		Middle	2.0	15.90	16.00		7.92	7.92		30.73	30.73		76.9	77.0		6.31	6.32		2.48	2.44		<2	
24/12/14	3:55	Cloudy	Middle	2.0	17.80	17.80	17.80	7.93	7.93	7.93	31.63	31.63	31.66	86.8	87.3	87.1	6.84	6.87	6.85	2.49	2.42	2.54	3	4.00
	3:56		Middle	2.0	17.80	17.80		7.93	7.93		31.69	31.70		87.4	87.0		6.86	6.84		2.66	2.60		5	
26/12/14	4:27	Cloudy	Middle	2.0	17.00	17.00	17.00	8.10	8.11	8.10	31.72	31.72	31.72	84.5	86.2	85.8	6.74	6.87	6.84	2.02	2.40	2.17	2	2.00
	4:28		Middle	2.0	17.00	17.00		8.10	8.10		31.72	31.72		85.8	86.6		6.85	6.91		2.11	2.14		2	

Remarks:
Single underline denotes exceedance over Action Level.
Double underline denotes exceedance over Limit Level.



**Water Monitoring Result at RW21-P789 - Sun Hung Kai Centre
Mid-Ebb Tide**

Date	Time	Weater Condition	Sampling Depth		Water Temperature		pH			Salinity			DO Saturation		DO		Turbidity		Suspended Solids					
					°C		-			ppt			%		mg/L		NTU		mg/L					
					Value	Average	Value	Average	Value	Average	Value	Average	Value	Average	Value	Average	Value	Average	Value	Average				
28/11/14	3:00	Cloudy	Middle	3.5	23.07	23.07	23.07	8.03	8.03	8.04	32.26	32.26	32.26	89.5	87.9	86.9	6.70	6.58	6.51	1.79	1.60	1.69	3	3.00
	3:01		Middle	3.5	23.07	23.07		8.04	8.04		32.26	32.26		85.5	84.6		6.41	6.34		1.72	1.63		3	
1/12/14	19:18	Cloudy	Middle	3.5	21.40	21.40	21.35	7.88	7.88	7.88	31.53	31.53	31.67	81.2	81.6	81.7	5.97	6.00	6.01	2.86	2.75	2.86	6	6.00
	19:19		Middle	3.5	21.30	21.30		7.88	7.88		31.81	31.81		82.0	81.8		6.03	6.02		2.93	2.90		6	
3/12/14	10:30	Cloudy	Middle	3.0	22.00	22.00	21.90	8.17	8.17	8.17	32.19	32.19	32.19	84.3	83.5	83.3	6.13	6.07	6.03	4.53	4.54	4.53	6	5.00
	10:32		Middle	3.0	21.80	21.80		8.17	8.17		32.19	32.19		82.9	82.3		6.03	5.89		4.54	4.51		4	
5/12/14	11:20	Cloudy	Middle	3.0	21.00	21.00	20.95	8.21	8.21	8.22	32.17	32.17	32.18	85.5	86.7	85.8	6.32	6.41	6.35	4.28	4.00	3.98	5	4.00
	11:22		Middle	3.0	20.90	20.90		8.22	8.22		32.18	32.18		86.0	85.0		6.36	6.29		4.00	3.64		3	
8/12/14	22:40	Cloudy	Middle	3.5	20.10	20.10	20.03	7.90	7.90	7.91	32.14	32.14	32.15	92.4	90.7	91.3	6.96	6.85	6.89	2.28	2.31	2.42	2	2.00
	22:41		Middle	3.5	19.90	20.00		7.91	7.91		32.15	32.15		91.5	90.5		6.91	6.84		2.59	2.49		<2	
10/12/14	2:52	Cloudy	Middle	3.5	20.20	20.20	20.20	7.87	7.87	7.88	31.98	31.98	32.04	87.4	88.4	88.2	6.55	6.62	6.61	2.26	2.32	2.40	2	2.00
	2:53		Middle	3.5	20.20	20.20		7.88	7.88		32.09	32.09		88.9	88.2		6.66	6.61		2.58	2.44		2	
12/12/14	23:21	Cloudy	Middle	3.5	20.00	20.00	20.00	7.73	7.73	7.74	31.96	31.98	31.98	89.3	88.7	88.4	6.73	6.68	6.67	2.29	2.38	2.23	2	2.00
	23:22		Middle	3.5	20.00	20.00		7.75	7.75		31.99	31.99		88.1	87.5		6.64	6.62		2.09	2.15		2	
15/12/14	8:40	Cloudy	Middle	3.0	19.10	19.10	19.10	7.88	7.88	7.88	29.62	29.62	28.90	73.5	74.1	73.2	5.72	5.78	5.70	1.63	1.99	1.89	2	2.00
	8:41		Middle	3.0	19.10	19.10		7.87	7.87		29.69	26.68		72.0	73.2		5.60	5.70		2.04	1.89		<2	
17/12/14	20:00	Fine	Middle	3.5	16.50	16.50	16.45	8.01	8.01	8.02	31.93	31.93	31.93	89.2	88.6	88.9	7.19	7.15	7.18	2.85	2.38	2.49	<2	≤2
	20:01		Middle	3.5	16.40	16.40		8.02	8.02		31.93	31.93		88.7	89.1		7.17	7.19		2.28	2.43		<2	
19/12/14	20:06	Cloudy	Middle	3.0	13.30	13.30	13.25	7.74	7.74	7.77	31.88	31.88	31.89	91.1	91.4	91.1	7.23	7.25	7.23	1.89	1.94	1.96	4	3.50
	20:07		Middle	3.0	13.20	13.20		7.79	7.79		31.90	31.90		90.6	91.4		7.19	7.26		2.01	1.99		3	
22/12/14	1:07	Cloudy	Middle	3.0	15.20	15.20	15.20	8.06	8.06	8.06	30.12	30.12	30.12	81.8	81.6	81.7	6.83	6.81	6.82	2.46	2.39	2.39	<2	≤2
	1:08		Middle	3.0	15.20	15.20		8.06	8.06		30.12	30.12		81.7	81.6		6.82	6.82		2.41	2.30		<2	
24/12/14	1:35	Cloudy	Middle	3.0	17.50	17.50	17.50	7.88	7.88	7.89	30.68	30.68	30.68	82.9	84.1	83.6	6.58	6.66	6.63	2.34	2.19	2.16	2	2.50
	1:36		Middle	3.0	17.50	17.50		7.89	7.89		30.68	30.68		83.9	83.6		6.65	6.63		2.01	2.11		3	
26/12/14	1:55	Cloudy	Middle	3.5	17.80	17.80	17.85	7.97	7.97	7.97	31.43	31.43	31.43	83.4	82.2	83.2	6.60	6.46	6.55	2.49	2.43	2.55	3	3.00
	1:56		Middle	3.5	17.90	17.90		7.97	7.97		31.43	31.43		83.8	83.2		6.61	6.54		2.32	2.95		3	

Remarks:
Single underline denotes exceedance over Action Level.
Double underline denotes exceedance over Limit Level.



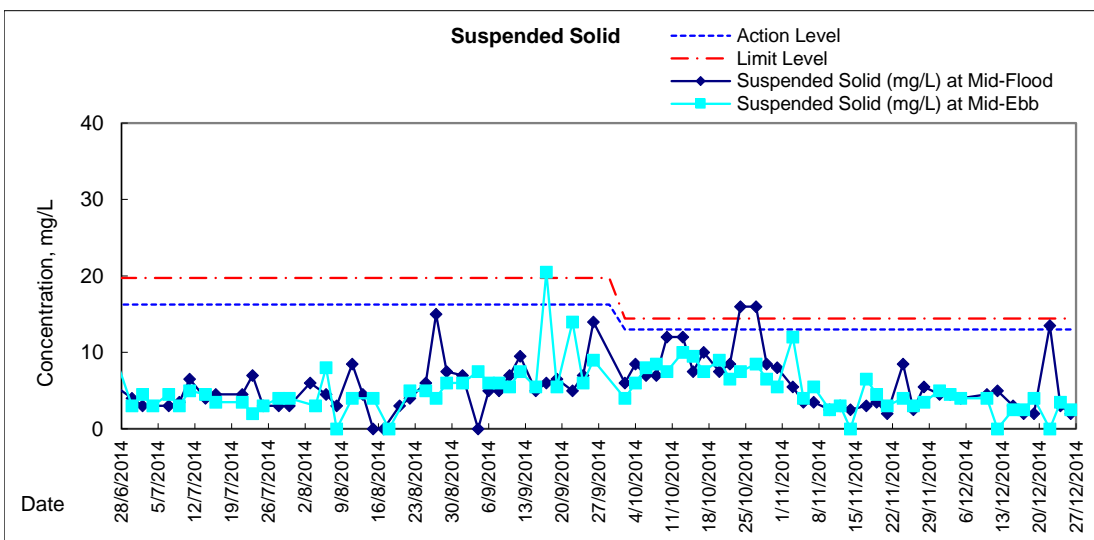
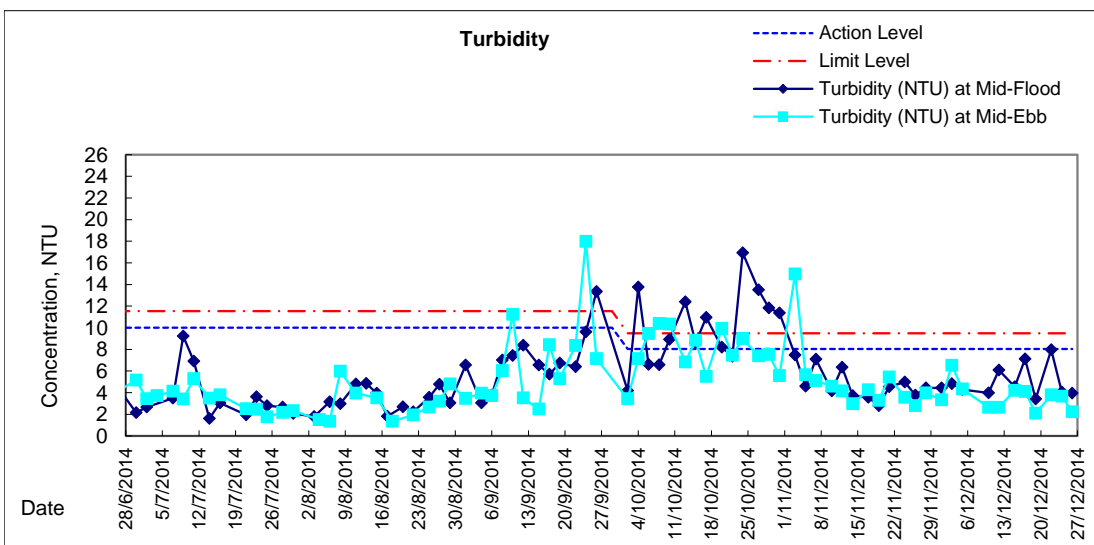
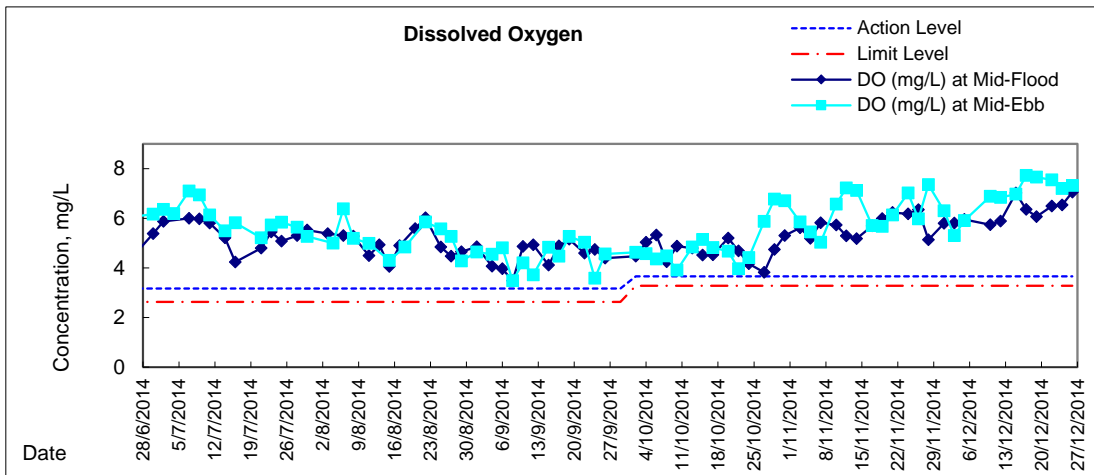
**Water Monitoring Result at WSD19 - Sheung Wan
Mid-Ebb Tide**

Date	Time	Weather Condition	Sampling Depth		Water Temperature		pH			Salinity		DO Saturation		DO		Turbidity		Suspended Solids						
					°C		-		ppt		%		mg/L		NTU		mg/L							
			m	Value	Average	Value	Average	Value	Average	Value	Average	Value	Average	Value	Average	Value	Average	Value	Average					
28/11/14	4:40	Cloudy	Middle	2.5	22.86	22.86	22.86	8.15	8.15	8.16	31.99	31.99	32.01	98.5	98.3	98.1	7.39	7.37	7.36	3.87	3.99	3.97	3	3.50
	4:41		Middle	2.5	22.85	22.85		8.16	8.16		32.01	32.03		97.8	97.7		7.34	7.33		3.97	4.05		4	
1/12/14	21:13	Cloudy	Middle	2.5	21.70	21.70	21.65	8.02	8.02	8.03	32.03	32.03	32.02	85.8	86.9	86.2	6.27	6.35	6.30	3.77	3.26	3.33	5	5.00
	21:14		Middle	2.5	21.60	21.60		8.03	8.03		32.01	32.01		86.4	85.7		6.32	6.26		3.21	3.08		5	
3/12/14	9:40	Cloudy	Middle	3.0	21.80	21.80	21.70	8.13	8.13	8.13	32.35	32.35	32.36	72.6	72.6	72.7	5.29	5.30	5.30	6.49	6.50	6.52	5	4.50
	9:42		Middle	3.0	21.60	21.60		8.13	8.13		32.36	32.36		72.5	73.1		5.29	5.33		6.53	6.57		4	
5/12/14	10:15	Cloudy	Middle	3.0	20.20	20.20	20.15	8.15	8.15	8.15	32.33	32.33	32.34	77.8	78.5	78.8	5.84	5.88	5.91	4.38	4.35	4.33	4	4.00
	10:17		Middle	3.0	20.10	20.10		8.14	8.14		32.35	32.35		79.2	79.5		5.94	5.96		4.30	4.28		4	
8/12/14	-	Cloudy	Middle	-	-	-	#DIV/0!	-	-	#DIV/0!	-	-	#DIV/0!	-	-	#DIV/0!	-	-	#DIV/0!	-	-	#DIV/0!	-	#DIV/0!
	-		Middle	-	-	-		-	-		-	-		-	-		-	-		-	-		-	
10/12/14	4:52	Cloudy	Middle	2.5	20.30	20.30	20.30	7.91	7.91	7.92	32.15	32.15	32.16	91.5	92.0	92.0	6.85	6.89	6.89	2.48	2.71	2.63	4	4.00
	4:53		Middle	2.5	20.30	20.30		7.92	7.92		32.16	32.16		92.4	92.1		6.92	6.89		2.87	2.46		4	
12/12/14	1:06	Cloudy	Middle	2.5	19.50	19.50	19.50	8.02	8.02	8.02	32.16	32.16	32.16	89.5	89.9	90.1	6.79	6.82	6.84	2.68	2.70	2.63	<2	<2
	1:07		Middle	2.5	19.50	19.50		8.02	8.02		32.15	32.15		90.4	90.6		6.86	6.88		2.76	2.39		<2	
15/12/14	6:28	Cloudy	Middle	2.5	18.90	18.90	18.90	7.92	7.92	7.93	32.15	32.15	32.15	89.6	90.9	90.8	6.88	6.99	6.98	4.56	4.04	4.20	2	2.50
	6:29		Middle	2.5	18.90	18.90		7.93	7.93		32.14	32.14		91.1	91.4		7.00	7.03		4.31	3.90		3	
17/12/14	20:33	Fine	Middle	2.5	16.30	16.30	16.25	7.91	7.91	7.92	31.63	31.63	31.67	94.0	96.0	95.4	7.62	7.77	7.73	4.19	4.12	4.12	3	2.50
	20:34		Middle	2.5	16.20	16.20		7.93	7.93		31.69	31.71		96.0	95.6		7.77	7.74		4.05	4.10		2	
19/12/14	20:54	Cloudy	Middle	2.5	13.40	13.30	13.28	7.62	7.62	7.63	31.38	31.38	31.39	96.6	96.6	96.2	7.69	7.69	7.66	2.10	2.08	2.09	4	4.00
	20:55		Middle	2.5	13.20	13.20		7.63	7.63		31.39	31.39		96.3	95.4		7.67	7.60		2.13	2.04		4	
22/12/14	1:46	Cloudy	Middle	2.5	15.40	15.40	15.40	8.01	8.01	8.02	31.67	31.65	31.68	90.7	91.5	91.6	7.48	7.55	7.55	3.80	3.84	3.80	<2	<2
	1:47		Middle	2.5	15.40	15.40		8.03	8.03		31.69	31.69		91.9	92.1		7.58	7.59		3.87	3.68		<2	
24/12/14	2:40	Cloudy	Middle	2.5	17.60	17.60	17.60	7.78	7.78	7.80	30.94	30.95	30.96	91.2	91.3	91.1	7.21	7.22	7.20	3.71	3.93	3.67	4	3.50
	2:41		Middle	2.5	17.60	17.60		7.82	7.82		30.98	30.98		91.0	90.8		7.20	7.18		3.55	3.50		3	
26/12/14	0:25	Cloudy	Middle	3.0	17.90	17.90	17.90	7.76	7.76	7.77	31.68	31.68	31.69	93.9	94.4	94.0	7.33	7.36	7.33	2.28	2.25	2.23	3	2.50
	0:26		Middle	3.0	17.90	17.90		7.77	7.77		31.70	31.70		94.0	93.5		7.33	7.29		2.19	2.21		2	

Remarks:
Single underline denotes exceedance over Action Level.
Double underline denotes exceedance over Limit Level.

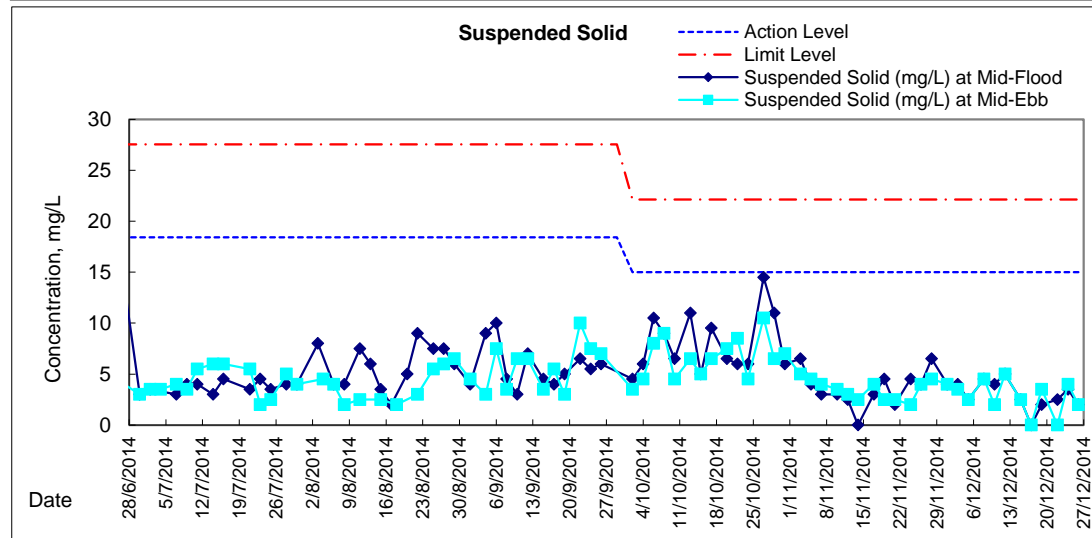
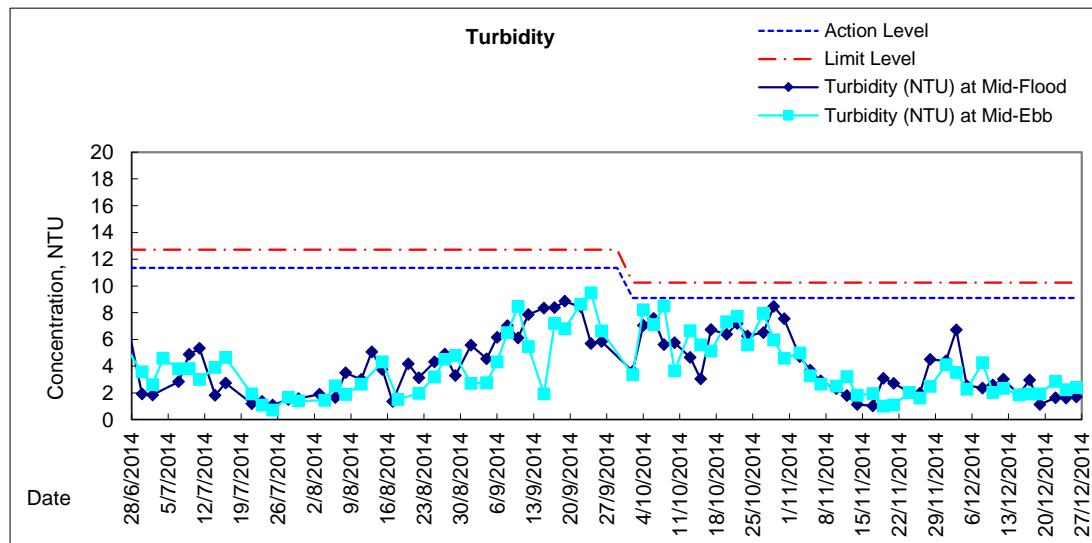
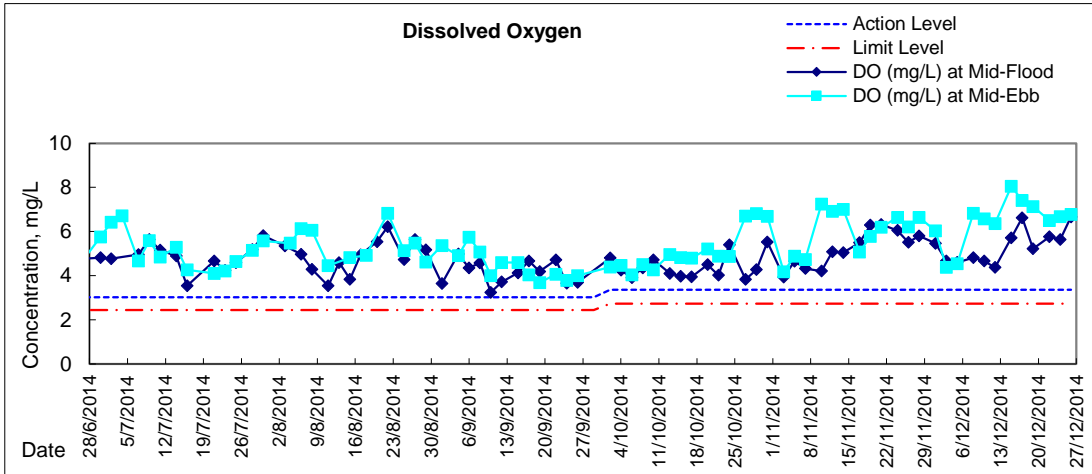


Graphic Presentation of Water Quality Result of WSD19 - Sheung Wan



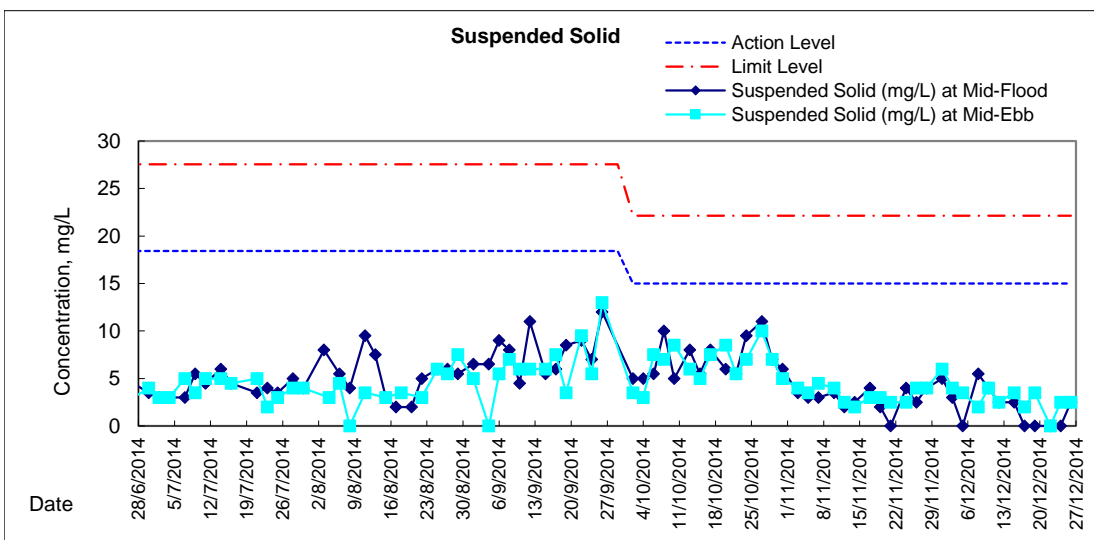
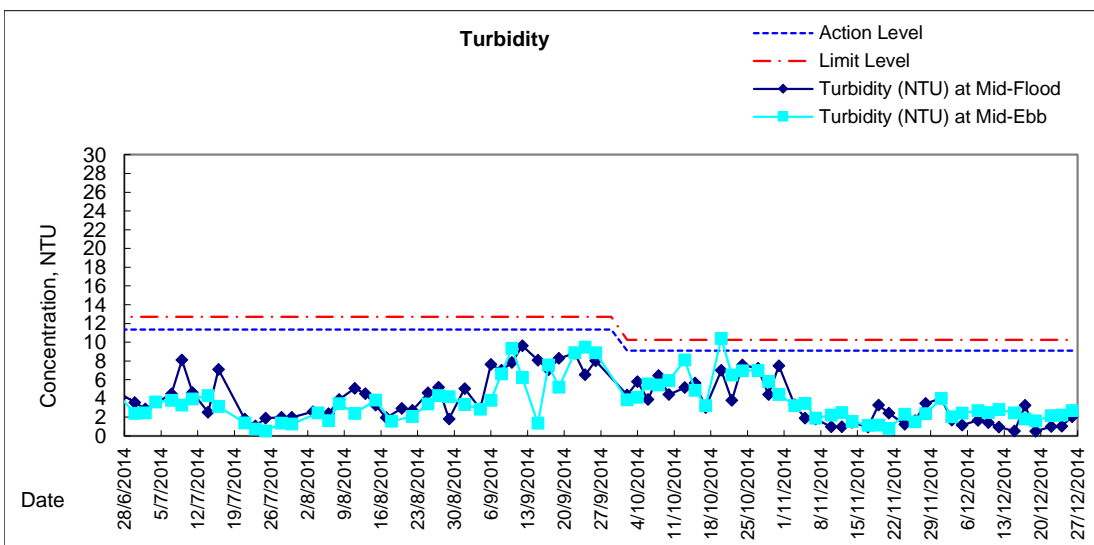
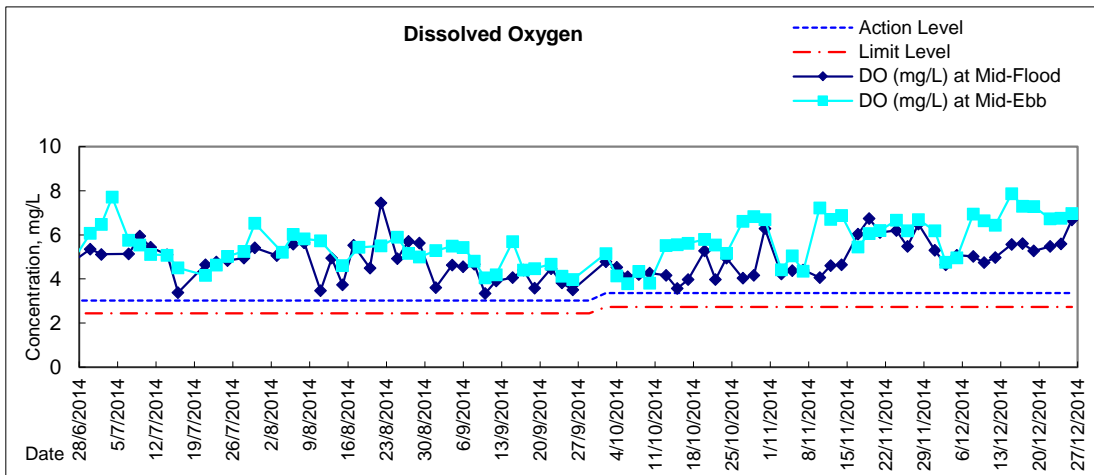


Graphic Presentation of Water Quality Result of C1 - HKCEC



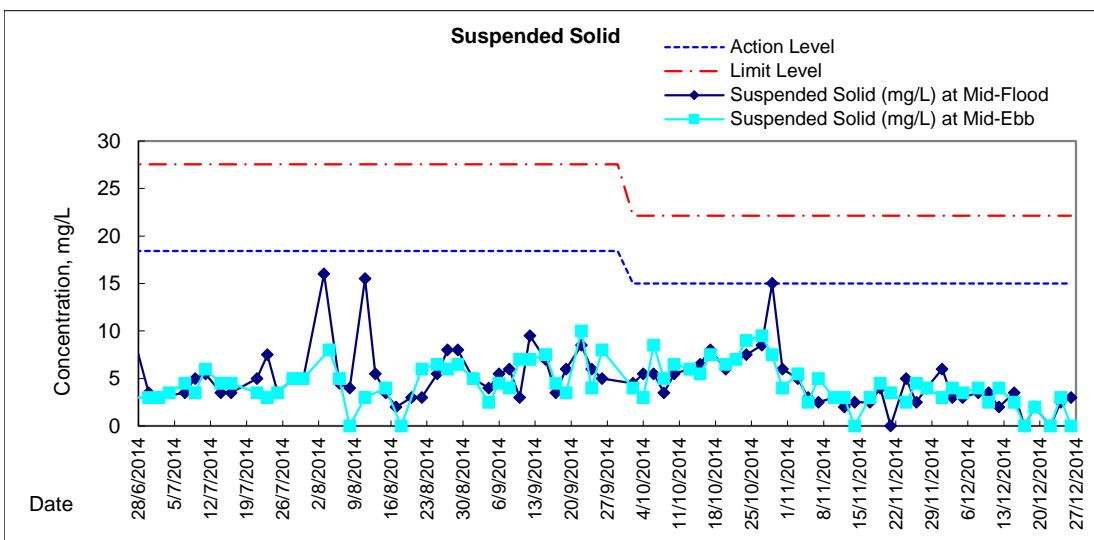
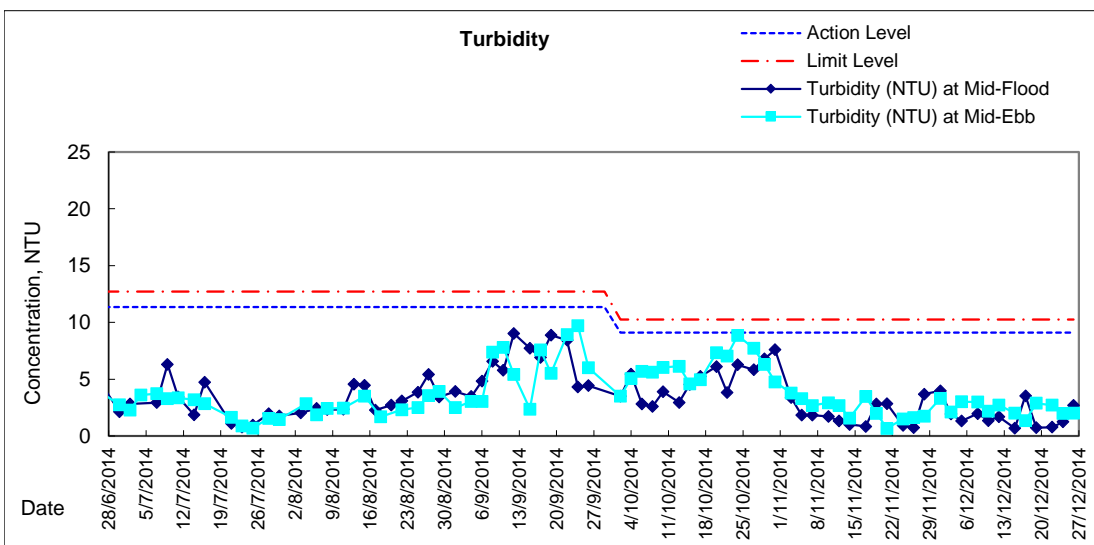
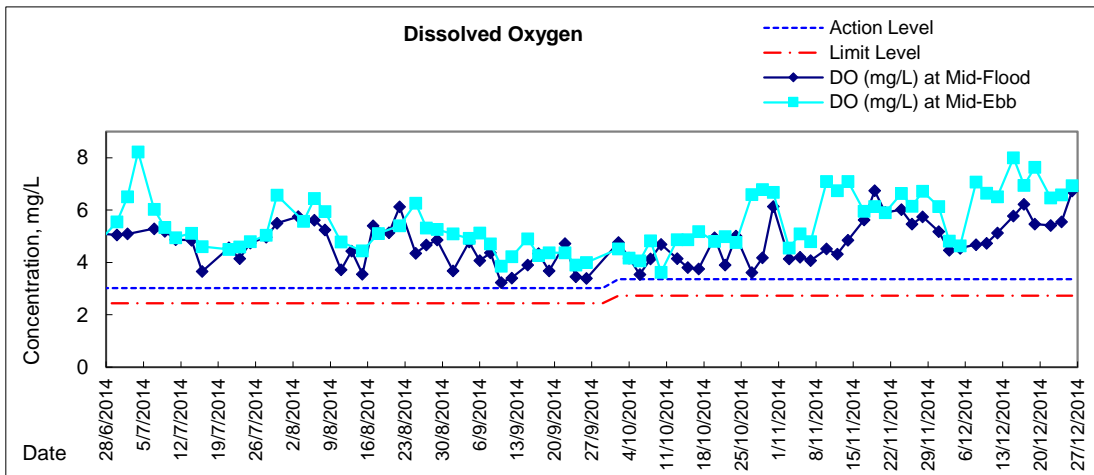


Graphic Presentation of Water Quality Result of P1 - HKCEC Phase I



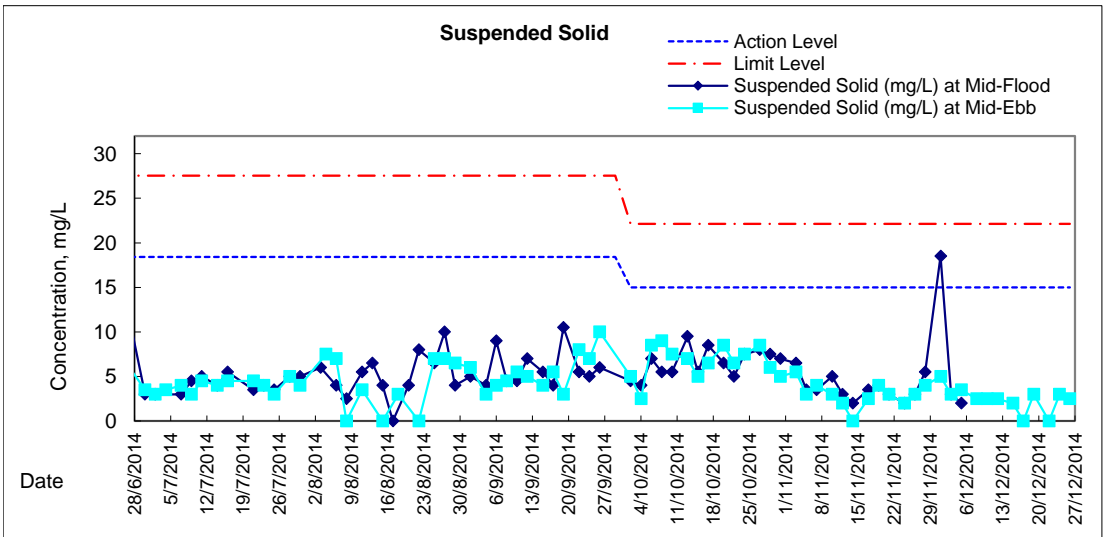
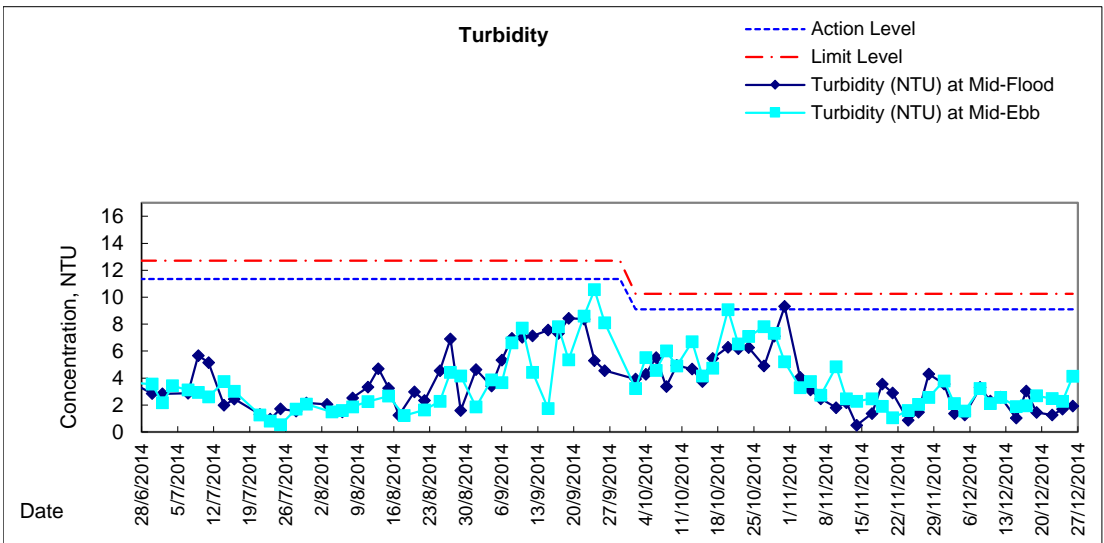
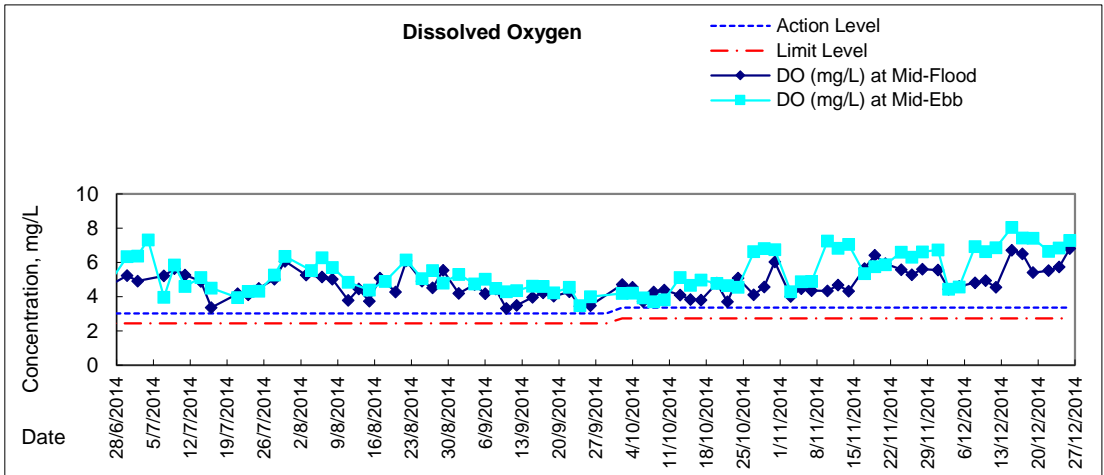


Graphic Presentation of Water Quality Result of P3 - APA



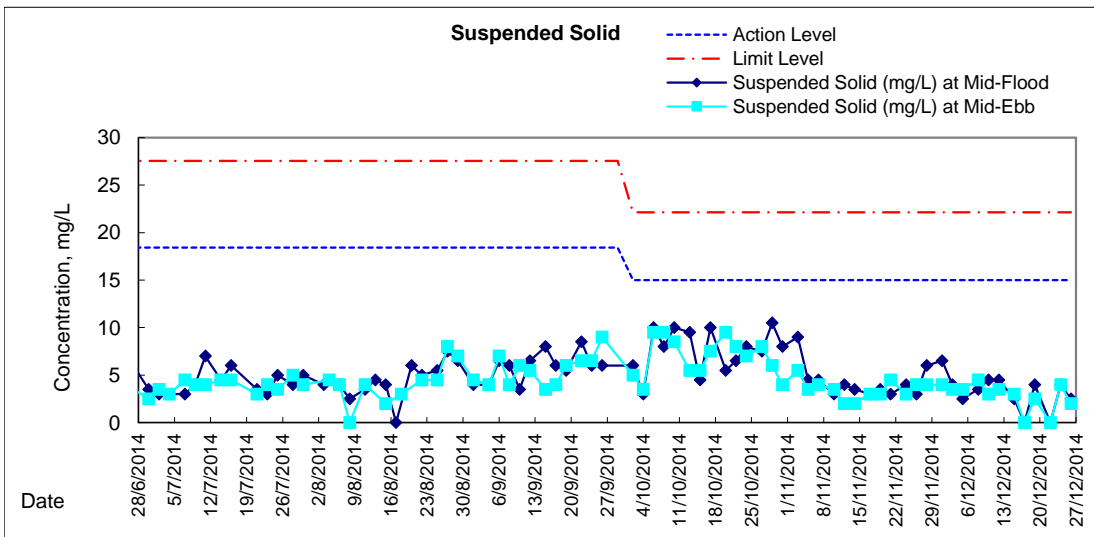
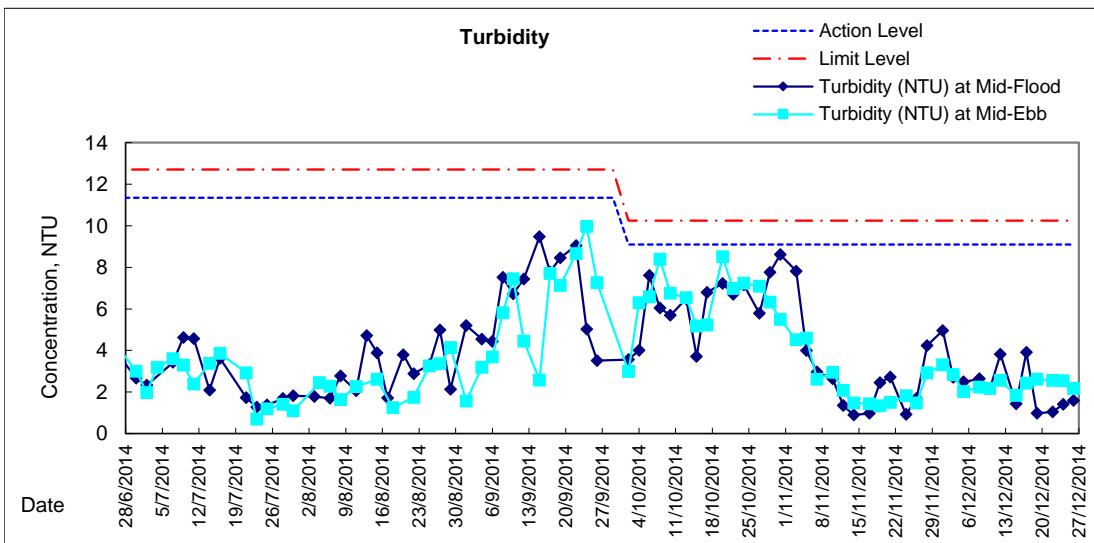
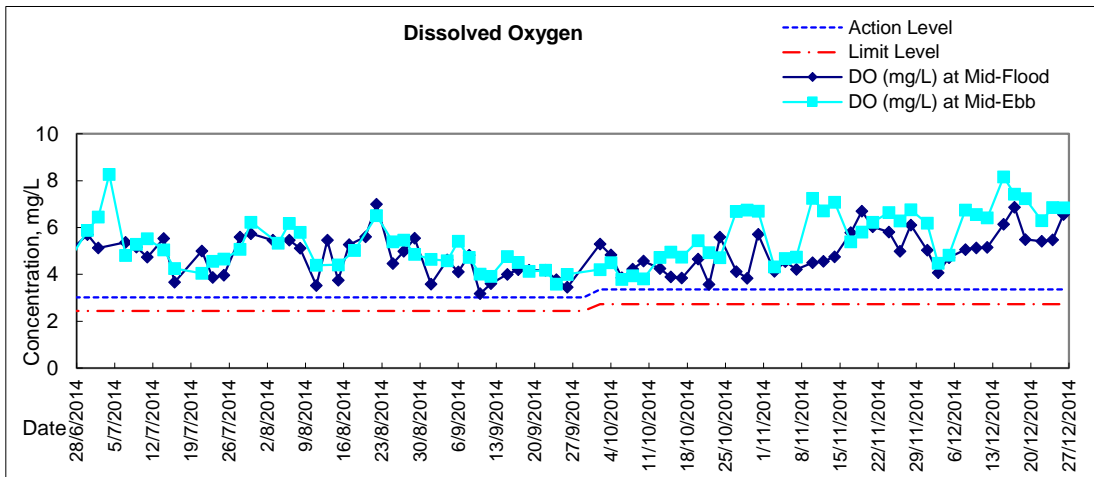


Graphic Presentation of Water Quality Result of P5 - WCT / RT / IT



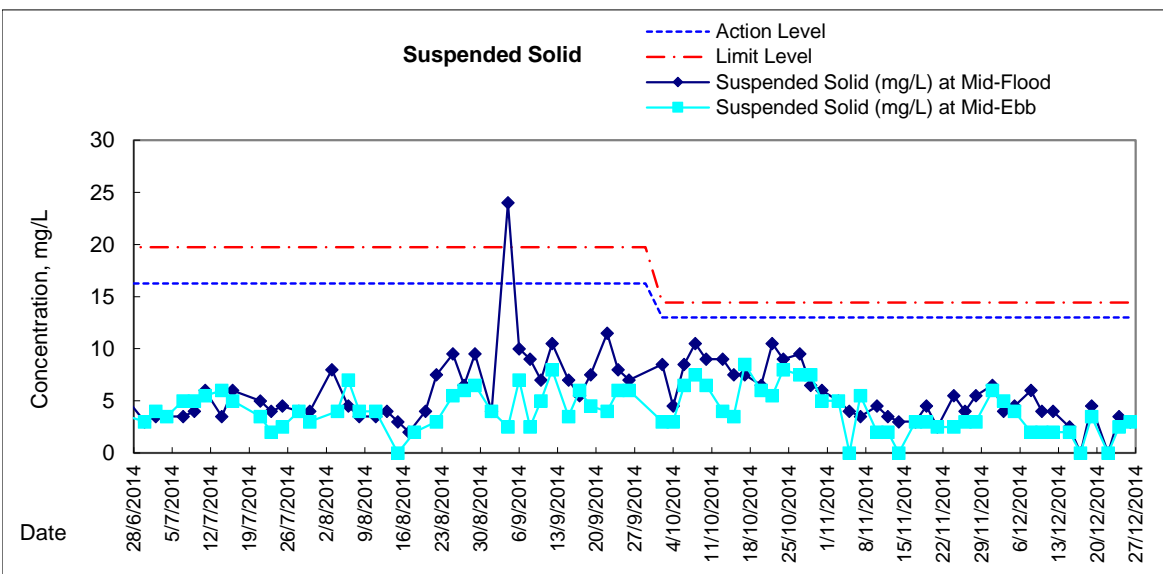
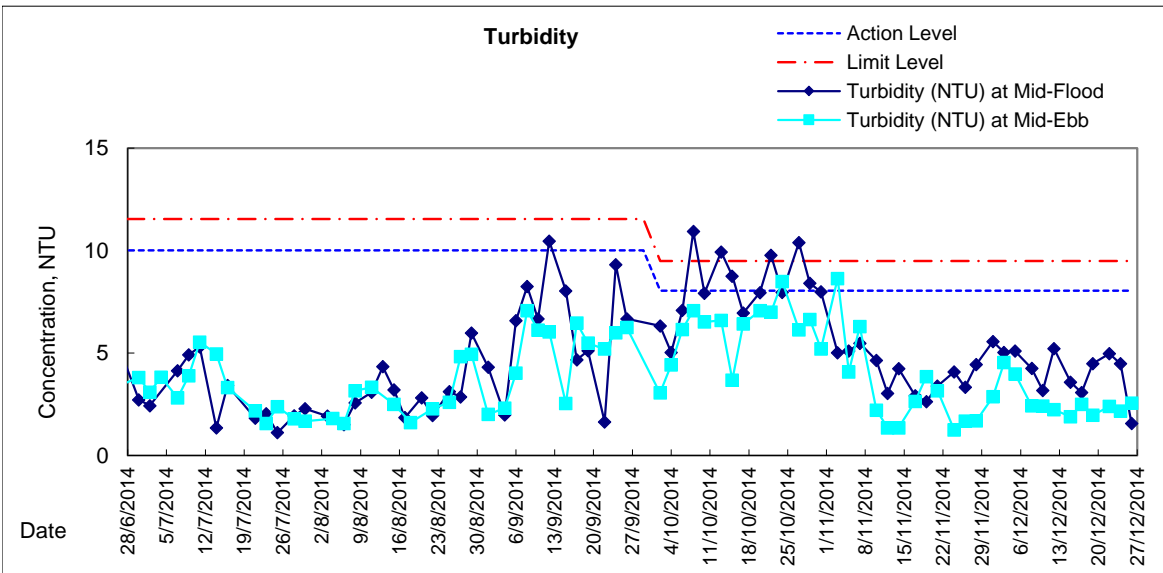
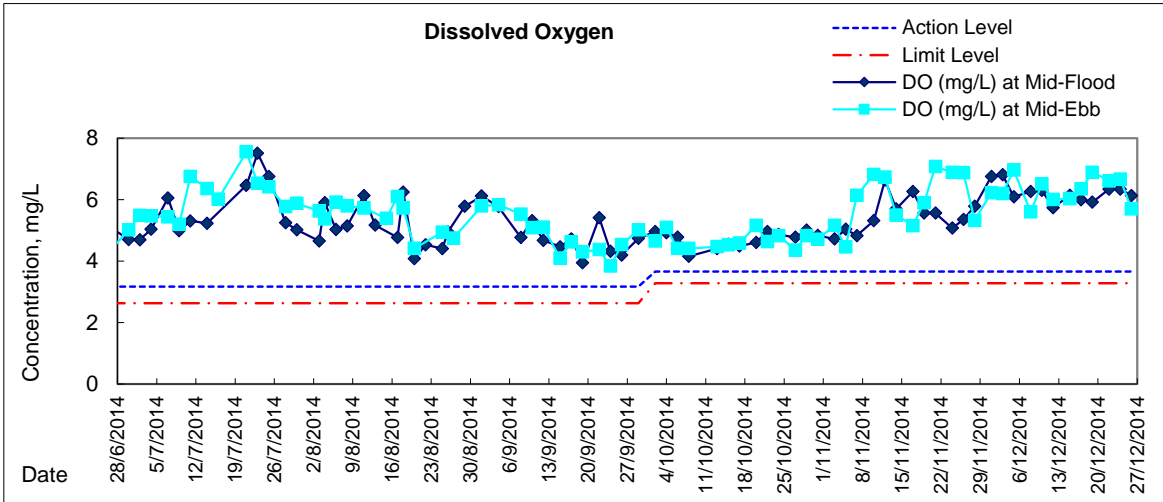


Graphic Presentation of Water Quality Result of P4 - SOC



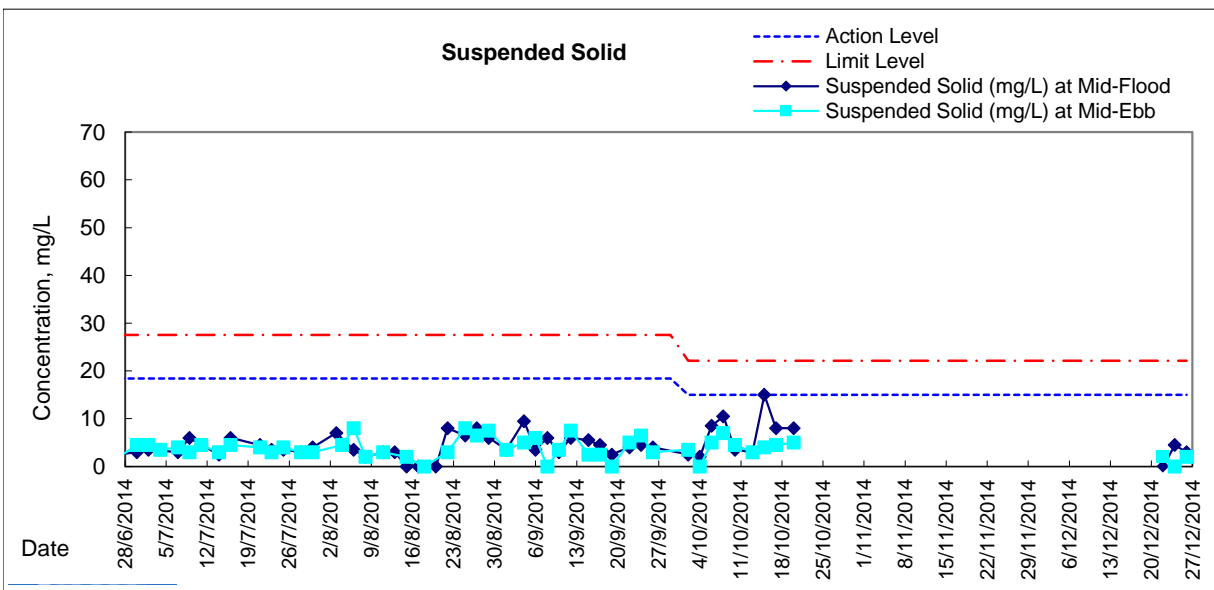
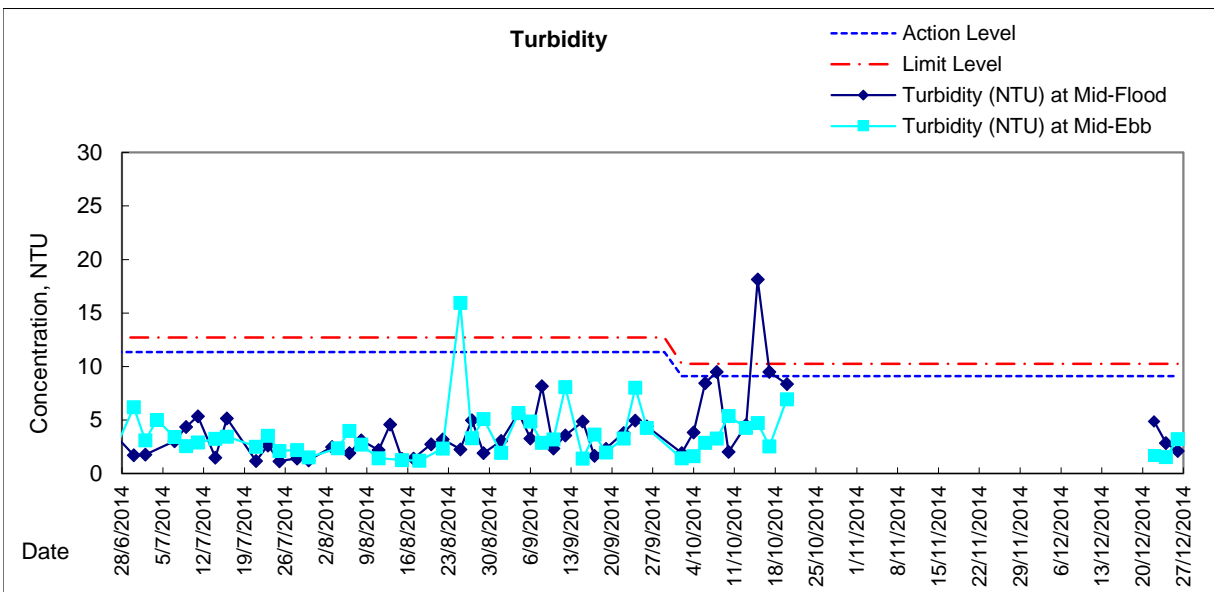
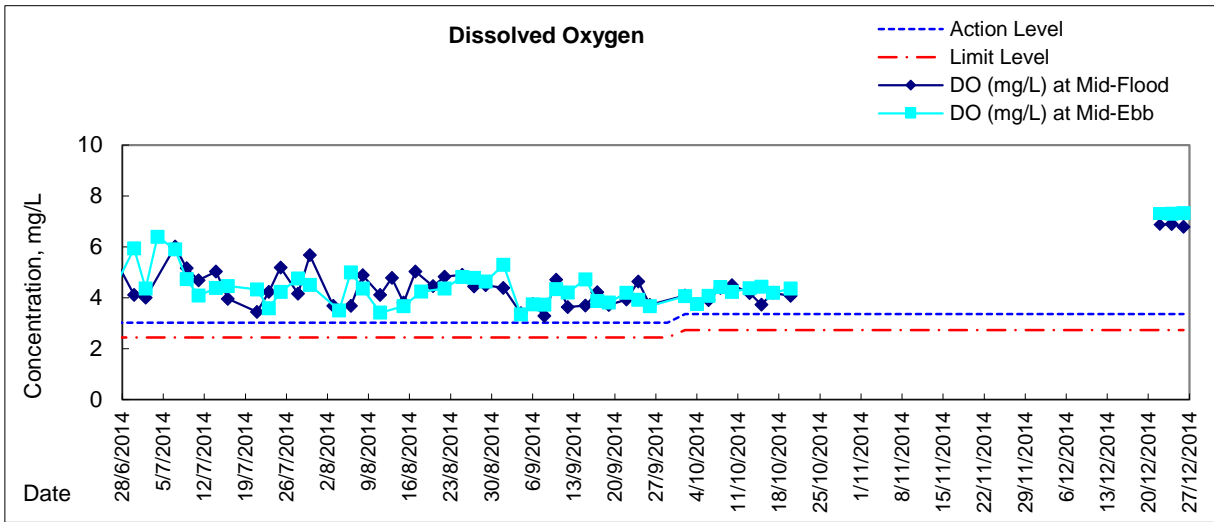


Graphic Presentation of Water Quality Result of RW21-P789 - GEC/CRC/SHK





Graphic Presentation of Water Quality Result of C7 - Windsor House





**Water Monitoring Result at C6 - Excelsior Hotel
Mid-Flood Tide**

Date	Time	Weather Condition	Sampling Depth m		Water Temperature °C			pH			Salinity ppt		DO Saturation %			DO mg/L			
					Value	Average	Value	Average	Value	Average	Value	Average	Value	Average					
28/11/2014	-	Fine	Surface	-	-	-	-	-	-	-	-	-	-	-	-	-	-	-	
	11:48		Middle	1.5	24.00	24.00	24.0	8.16	8.16	8.2	32.43	32.43	32.4	81.9	80.5	81.2	5.72	5.62	5.67
	-		Bottom	-	-	-	-	-	-	-	-	-	-	-	-	-	-	-	-
1/12/2014	-	Cloudy	Surface	-	-	-	-	-	-	-	-	-	-	-	-	-	-	-	
	15:50		Middle	1.5	23.00	23.00	23.0	8.12	8.12	8.1	31.52	31.52	31.5	73.4	74.1	73.8	5.26	5.31	5.29
	-		Bottom	-	-	-	-	-	-	-	-	-	-	-	-	-	-	-	-
3/12/2014	-	Cloudy	Surface	-	-	-	-	-	-	-	-	-	-	-	-	-	-	-	
	15:50		Middle	1.5	22.10	22.10	22.1	8.20	8.20	8.2	31.49	31.49	31.5	82.0	82.1	82.1	5.96	5.97	5.97
	-		Bottom	-	-	-	-	-	-	-	-	-	-	-	-	-	-	-	-
5/12/2014	-	Fine	Surface	-	-	-	-	-	-	-	-	-	-	-	-	-	-	-	
	17:05		Middle	1.5	21.00	21.00	21.0	8.23	8.23	8.2	31.58	31.58	31.6	77.4	77.1	77.3	5.74	5.72	5.73
	-		Bottom	-	-	-	-	-	-	-	-	-	-	-	-	-	-	-	-
8/12/2014	-	Fine	Surface	-	-	-	-	-	-	-	-	-	-	-	-	-	-	-	
	11:05		Middle	1.5	21.10	21.10	21.1	8.19	8.19	8.2	31.61	31.61	31.6	78.1	78.1	78.1	5.77	5.78	5.78
	-		Bottom	-	-	-	-	-	-	-	-	-	-	-	-	-	-	-	-
10/12/2014	-	Cloudy	Surface	-	-	-	-	-	-	-	-	-	-	-	-	-	-	-	
	9:54		Middle	1.5	21.00	21.00	21.0	8.19	8.19	8.2	31.65	31.65	31.7	75.8	78.0	76.9	5.64	5.80	5.72
	-		Bottom	-	-	-	-	-	-	-	-	-	-	-	-	-	-	-	-
12/12/2014	-	Fine	Surface	-	-	-	-	-	-	-	-	-	-	-	-	-	-	-	
	10:05		Middle	1.5	19.90	19.90	19.9	8.19	8.19	8.2	31.39	31.39	31.4	82.9	82.4	82.7	6.30	6.26	6.28
	-		Bottom	-	-	-	-	-	-	-	-	-	-	-	-	-	-	-	-
15/12/2014	-	Fine	Surface	-	-	-	-	-	-	-	-	-	-	-	-	-	-	-	
	12:05		Middle	1.5	20.60	20.60	20.6	8.17	8.17	8.2	31.10	31.10	31.1	85.4	84.9	85.2	6.41	6.37	6.39
	-		Bottom	-	-	-	-	-	-	-	-	-	-	-	-	-	-	-	-
17/12/2014	-	Fine	Surface	-	-	-	-	-	-	-	-	-	-	-	-	-	-	-	
	15:06		Middle	1.5	18.70	18.70	18.7	8.20	8.20	8.2	31.32	31.32	31.3	87.6	87.0	87.3	6.78	6.73	6.76
	-		Bottom	-	-	-	-	-	-	-	-	-	-	-	-	-	-	-	-
19/12/2014	-	Cloudy	Surface	-	-	-	-	-	-	-	-	-	-	-	-	-	-	-	
	15:02		Middle	1.5	18.30	18.30	18.3	8.28	8.28	8.3	31.01	31.01	31.0	71.1	71.3	71.2	5.56	5.58	5.57
	-		Bottom	-	-	-	-	-	-	-	-	-	-	-	-	-	-	-	-
22/12/2014	-	Fine	Surface	-	-	-	-	-	-	-	-	-	-	-	-	-	-	-	
	7:50		Middle	1.5	17.30	17.30	17.3	8.32	8.32	8.3	31.31	31.31	31.3	89.0	89.1	89.1	7.10	7.11	7.11
	-		Bottom	-	-	-	-	-	-	-	-	-	-	-	-	-	-	-	-
24/12/2014	-	Fine	Surface	-	-	-	-	-	-	-	-	-	-	-	-	-	-	-	
	7:25		Middle	1.5	17.90	17.90	17.9	8.25	8.25	8.3	31.27	31.27	31.3	86.8	86.3	86.6	6.83	6.79	6.81
	-		Bottom	-	-	-	-	-	-	-	-	-	-	-	-	-	-	-	-
26/12/2014	-	Cloudy	Surface	-	-	-	-	-	-	-	-	-	-	-	-	-	-	-	
	10:43		Middle	1.0	18.10	18.10	18.1	8.06	8.06	8.1	26.62	26.63	26.6	64.9	64.7	64.8	5.35	5.33	5.34
	-		Bottom	-	-	-	-	-	-	-	-	-	-	-	-	-	-	-	-

Remarks:
Single underline denotes exceedance over Action Level.
Double underline denotes exceedance over Limit Level.



**Water Monitoring Result at Ex-WPCWA SW - South-western corners of ex-Public Cargo Works Area
Mid-Flood Tide**

Date	Time	Weather Condition	Sampling Depth m		Water Temperature °C			pH			Salinity ppt			DO Saturation %			DO mg/L		
					Value	Average	Value	Average	Value	Average	Value	Average	Value	Average	Value	Average			
28/11/2014	11:20	Fine	Surface	1.0	24.00	24.00	24.0	8.21	8.21	8.2	27.23	27.23	27.2	74.7	70.4	72.6	5.38	5.07	5.23
	-		Middle	-	-	-	-	-	-	-	-	-	-	-	-	-	-	-	-
	11:22		Bottom	4.0	23.80	23.80	23.8	8.17	8.17	8.2	31.90	31.90	31.9	72.6	72.2	72.4	5.10	5.08	5.09
1/12/2014	15:14	Cloudy	Surface	1.0	22.90	22.90	22.9	8.06	8.06	8.1	27.42	27.42	27.4	63.0	62.6	62.8	4.62	4.60	4.61
	-		Middle	-	-	-	-	-	-	-	-	-	-	-	-	-	-	-	-
	15:16		Bottom	4.0	22.90	22.90	22.9	8.04	8.04	8.0	31.50	31.50	31.5	67.7	67.7	67.7	4.84	4.85	4.85
3/12/2014	15:20	Cloudy	Surface	1.0	22.30	22.30	22.3	8.19	8.19	8.2	31.52	31.52	31.5	73.5	74.5	74.0	5.35	5.40	5.38
	-		Middle	-	-	-	-	-	-	-	-	-	-	-	-	-	-	-	-
	15:22		Bottom	3.0	22.30	22.30	22.3	8.20	8.20	8.2	30.71	30.71	30.7	70.3	70.6	70.5	5.12	5.14	5.13
5/12/2014	16:30	Fine	Surface	1.0	21.50	21.30	21.4	8.17	8.17	8.2	31.57	31.57	31.6	80.4	80.7	80.6	5.92	5.94	5.93
	-		Middle	-	-	-	-	-	-	-	-	-	-	-	-	-	-	-	-
	16:32		Bottom	4.0	21.50	21.50	21.5	8.20	8.20	8.2	31.70	31.70	31.7	77.4	78.4	77.9	5.68	5.75	5.72
8/12/2014	10:51	Fine	Surface	1.0	21.10	21.10	21.1	8.19	8.19	8.2	31.66	31.66	31.7	77.3	75.8	76.6	5.71	5.60	5.66
	-		Middle	-	-	-	-	-	-	-	-	-	-	-	-	-	-	-	-
	10:53		Bottom	4.0	21.20	21.20	21.2	8.20	8.20	8.2	30.92	30.92	30.9	73.9	73.8	73.9	5.48	5.47	5.48
10/12/2014	9:08	Cloudy	Surface	1.0	20.90	20.90	20.9	8.22	8.22	8.2	31.33	31.33	31.3	76.5	76.5	76.5	5.69	5.69	5.69
	-		Middle	-	-	-	-	-	-	-	-	-	-	-	-	-	-	-	-
	9:10		Bottom	4.0	20.80	20.80	20.8	8.20	8.20	8.2	31.79	31.79	31.8	80.9	80.1	80.5	6.02	5.95	5.99
12/12/2014	9:42	Fine	Surface	1.0	20.30	20.30	20.3	8.19	8.19	8.2	30.61	30.61	30.6	68.9	70.2	69.6	5.22	5.34	5.28
	-		Middle	-	-	-	-	-	-	-	-	-	-	-	-	-	-	-	-
	9:44		Bottom	3.0	20.20	20.20	20.2	8.18	8.18	8.2	31.76	31.76	31.8	73.3	73.4	73.4	5.51	5.52	5.52
15/12/2014	11:40	Fine	Surface	1.0	20.10	20.10	20.1	8.24	8.24	8.2	31.29	31.29	31.3	79.5	79.4	79.5	6.00	5.99	6.00
	-		Middle	-	-	-	-	-	-	-	-	-	-	-	-	-	-	-	-
	11:42		Bottom	3.0	20.00	20.00	20.0	8.21	8.21	8.2	31.29	31.29	31.3	79.2	79.7	79.5	5.98	6.03	6.01
17/12/2014	14:47	Fine	Surface	1.0	19.30	19.30	19.3	8.23	8.23	8.2	29.81	29.81	29.8	78.1	76.9	77.5	6.04	5.95	6.00
	-		Middle	-	-	-	-	-	-	-	-	-	-	-	-	-	-	-	-
	14:49		Bottom	4.0	18.90	18.90	18.9	8.23	8.23	8.2	31.82	31.82	31.8	83.7	82.4	83.1	6.44	6.33	6.39
19/12/2014	14:35	Cloudy	Surface	1.0	18.30	18.30	18.3	8.26	8.26	8.3	31.45	31.45	31.5	84.4	82.4	83.4	6.59	6.44	6.52
	-		Middle	-	-	-	-	-	-	-	-	-	-	-	-	-	-	-	-
	14:37		Bottom	4.0	18.30	18.30	18.3	8.27	8.27	8.3	30.91	30.91	30.9	80.7	79.8	80.3	6.31	6.24	6.28
22/12/2014	7:35	Fine	Surface	1.0	17.20	17.20	17.2	8.26	8.26	8.3	31.47	31.47	31.5	85.1	87.0	86.1	6.86	6.94	6.90
	-		Middle	-	-	-	-	-	-	-	-	-	-	-	-	-	-	-	-
	7:37		Bottom	3.0	17.10	17.10	17.1	8.28	8.28	8.3	31.49	31.49	31.5	80.7	78.4	79.6	6.40	6.25	6.33
24/12/2014	7:10	Fine	Surface	1.0	18.10	18.10	18.1	8.23	8.23	8.2	30.93	30.93	30.9	80.7	81.3	81.0	6.34	6.39	6.37
	-		Middle	-	-	-	-	-	-	-	-	-	-	-	-	-	-	-	-
	7:12		Bottom	3.0	18.00	18.00	18.0	8.16	8.16	8.2	30.95	30.95	31.0	74.1	74.0	74.1	5.83	5.82	5.83
26/12/2014	9:11	Cloudy	Surface	1.0	18.10	18.10	18.1	8.13	8.13	8.1	25.12	25.12	25.1	68.1	68.0	68.1	5.64	5.64	5.64
	-		Middle	-	-	-	-	-	-	-	-	-	-	-	-	-	-	-	-
	9:13		Bottom	4.0	18.10	18.10	18.1	8.12	8.12	8.1	25.14	25.12	25.1	67.9	67.8	67.9	5.62	5.61	5.62

Remarks:
 Single underline denotes exceedance over Action Level.
 Double underline denotes exceedance over Limit Level.



**Water Monitoring Result at Ex-WPCWA SE - South-eastern corners of ex-Public Cargo Works Area
Mid-Flood Tide**

Date	Time	Weather Condition	Sampling Depth m		Water Temperature °C			pH			Salinity ppt		DO Saturation %			DO mg/L			
					Value	Average	Value	Average	Value	Average	Value	Average	Value	Average	Value	Average			
28/11/2014	11:24	Fine	Surface	1.0	23.80	23.80	23.8	8.18	8.18	8.2	31.89	31.89	31.9	73.6	73.5	73.6	5.18	5.17	5.18
	-		Middle	-	-	-	-	-	-	-	-	-	-	-	-	-	-	-	-
	11:26		Bottom	4.0	23.80	23.80	23.8	8.18	8.18	8.2	32.31	32.32	32.3	78.7	76.4	77.6	5.39	5.37	5.38
1/12/2014	15:25	Cloudy	Surface	1.0	23.30	23.30	23.3	8.16	8.16	8.2	30.98	30.98	31.0	60.2	61.4	60.8	4.30	4.39	4.35
	15:23		Middle	3.0	23.00	23.00	23.0	8.18	8.18	8.2	31.16	31.16	31.2	74.7	75.0	74.9	5.35	5.37	5.36
	15:20		Bottom	5.0	23.00	23.00	23.0	8.17	8.17	8.2	31.16	31.16	31.2	69.2	69.1	69.2	4.96	4.96	<u>4.96</u>
3/12/2014	15:25	Cloudy	Surface	1.0	22.60	22.60	22.6	8.28	8.28	8.3	31.47	31.47	31.5	70.3	70.8	70.6	5.07	5.11	5.09
	-		Middle	-	-	-	-	-	-	-	-	-	-	-	-	-	-	-	-
	15:27		Bottom	3.0	22.40	22.40	22.4	8.31	8.31	8.3	31.68	31.68	31.7	74.1	74.2	74.2	5.37	5.38	5.38
5/12/2014	16:35	Fine	Surface	1.0	21.50	21.50	21.5	8.28	8.28	8.3	31.65	31.65	31.7	81.2	80.8	81.0	5.97	5.91	5.94
	-		Middle	-	-	-	-	-	-	-	-	-	-	-	-	-	-	-	-
	16:37		Bottom	4.0	21.40	21.40	21.4	8.29	8.29	8.3	31.70	31.70	31.7	80.8	81.2	81.0	5.93	5.96	5.95
8/12/2014	10:57	Fine	Surface	1.0	21.20	21.20	21.2	8.23	8.23	8.2	31.44	31.44	31.4	79.1	78.8	79.0	5.85	5.82	5.84
	-		Middle	-	-	-	-	-	-	-	-	-	-	-	-	-	-	-	-
	10:55		Bottom	4.0	21.10	21.10	21.1	8.20	8.20	8.2	31.77	31.77	31.8	76.9	76.0	76.5	5.68	5.61	5.65
10/12/2014	9:14	Cloudy	Surface	1.0	20.90	20.90	20.9	8.23	8.23	8.2	31.62	31.62	31.6	83.0	81.9	82.5	6.17	6.08	6.13
	-		Middle	-	-	-	-	-	-	-	-	-	-	-	-	-	-	-	-
	9:16		Bottom	4.0	20.90	20.90	20.9	8.23	8.23	8.2	31.81	31.81	31.8	80.9	80.2	80.6	6.00	5.95	5.98
12/12/2014	9:50	Fine	Surface	1.0	20.40	20.40	20.4	8.21	8.21	8.2	30.35	30.35	30.4	68.0	67.6	67.8	5.14	5.12	5.13
	-		Middle	-	-	-	-	-	-	-	-	-	-	-	-	-	-	-	-
	9:52		Bottom	4.0	20.10	20.10	20.1	8.19	8.19	8.2	30.98	30.98	31.0	78.3	77.7	78.0	5.92	5.88	5.90
15/12/2014	11:50	Fine	Surface	1.0	20.40	20.40	20.4	8.24	8.24	8.2	31.01	31.01	31.0	82.7	82.4	82.6	6.23	6.20	6.22
	-		Middle	-	-	-	-	-	-	-	-	-	-	-	-	-	-	-	-
	11:52		Bottom	3.0	20.30	20.30	20.3	8.30	8.30	8.3	31.06	31.06	31.1	81.4	80.9	81.2	6.13	6.10	6.12
17/12/2014	14:50	Fine	Surface	1.0	19.50	19.50	19.5	8.31	8.31	8.3	30.24	30.24	30.2	77.5	77.0	77.3	5.96	5.92	5.94
	-		Middle	-	-	-	-	-	-	-	-	-	-	-	-	-	-	-	-
	14:52		Bottom	4.0	19.00	19.00	19.0	8.30	8.30	8.3	30.23	30.23	30.2	77.1	76.1	76.6	5.97	5.90	5.94
19/12/2014	14:39	Cloudy	Surface	1.0	18.90	18.90	18.9	8.32	8.32	8.3	23.56	23.55	23.6	61.8	61.1	61.5	5.00	4.95	4.98
	-		Middle	-	-	-	-	-	-	-	-	-	-	-	-	-	-	-	-
	14:41		Bottom	4.0	18.60	18.60	18.6	8.20	8.20	8.2	30.69	30.69	30.7	76.2	74.6	75.4	5.94	5.82	5.88
22/12/2014	7:39	Fine	Surface	1.0	17.60	17.60	17.6	8.25	8.25	8.3	30.98	30.98	31.0	80.3	80.5	80.4	6.40	6.41	6.41
	-		Middle	-	-	-	-	-	-	-	-	-	-	-	-	-	-	-	-
	7:41		Bottom	4.0	17.30	17.30	17.3	8.26	8.26	8.3	30.99	30.99	31.0	77.9	75.7	76.8	6.21	6.14	6.18
24/12/2014	7:14	Fine	Surface	1.0	17.90	17.90	17.9	8.26	8.26	8.3	31.50	31.50	31.5	82.5	81.2	81.9	6.48	6.38	6.43
	-		Middle	-	-	-	-	-	-	-	-	-	-	-	-	-	-	-	-
	7:16		Bottom	3.0	17.60	17.60	17.6	8.13	8.13	8.1	31.44	31.44	31.4	73.8	73.4	73.6	5.80	5.76	5.78
26/12/2014	9:21	Cloudy	Surface	1.0	18.10	18.10	18.1	8.10	8.10	8.1	24.91	24.91	24.9	66.2	66.1	66.2	5.49	5.48	5.49
	-		Middle	-	-	-	-	-	-	-	-	-	-	-	-	-	-	-	-
	9:23		Bottom	4.0	18.10	18.10	18.1	8.09	8.09	8.1	24.91	24.91	24.9	65.6	66.0	65.8	5.44	5.48	5.46

Remarks:
Single underline denotes exceedance over Action Level.
Double underline denotes exceedance over Limit Level.



**Water Monitoring Result at C6 - Excelsior Hotel
Mid-Ebb Tide**

Date	Time	Weater Condition	Sampling Depth		Water Temperature			pH			Salinity		DO Saturation			DO			
					°C			-			ppt		%			mg/L			
			m	Value	Average	Value	Average	Value	Average	Value	Average	Value	Average	Value	Average				
28/11/2014	-	Cloudy	Surface	-	-	-	-	-	-	-	-	-	-	-	-	-	-	-	
	1:43		Middle	1.5	23.08	23.08	23.1	7.89	7.89	7.9	29.60	29.60	29.6	90.3	90.0	90.2	6.52	6.50	6.51
	-		Bottom	-	-	-	-	-	-	-	-	-	-	-	-	-	-	-	-
1/12/2014	-	Cloudy	Surface	-	-	-	-	-	-	-	-	-	-	-	-	-	-	-	
	18:50		Middle	1.5	21.30	21.30	21.3	7.88	7.88	7.9	31.04	31.03	31.0	77.6	76.5	77.1	5.73	5.65	5.69
	-		Bottom	-	-	-	-	-	-	-	-	-	-	-	-	-	-	-	-
3/12/2014	-	Cloudy	Surface	-	-	-	-	-	-	-	-	-	-	-	-	-	-	-	
	11:00		Middle	1.5	22.10	22.10	22.1	8.19	8.19	8.2	31.58	31.58	31.6	90.7	90.0	90.4	6.60	6.55	6.58
	-		Bottom	-	-	-	-	-	-	-	-	-	-	-	-	-	-	-	-
5/12/2014	-	Cloudy	Surface	-	-	-	-	-	-	-	-	-	-	-	-	-	-	-	
	11:50		Middle	1.5	20.90	20.90	20.9	8.20	8.20	8.2	31.11	31.11	31.1	82.1	82.6	82.4	6.14	6.17	6.16
	-		Bottom	-	-	-	-	-	-	-	-	-	-	-	-	-	-	-	-
8/12/2014	-	Cloudy	Surface	-	-	-	-	-	-	-	-	-	-	-	-	-	-	-	
	22:21		Middle	1.5	20.50	20.50	20.5	7.68	7.68	7.7	28.66	28.66	28.7	83.6	82.4	83.0	6.38	6.29	6.34
	-		Bottom	-	-	-	-	-	-	-	-	-	-	-	-	-	-	-	-
10/12/2014	-	Cloudy	Surface	-	-	-	-	-	-	-	-	-	-	-	-	-	-	-	
	1:35		Middle	1.5	20.10	20.10	20.1	7.80	7.80	7.8	28.92	28.92	28.9	76.2	76.0	76.1	5.82	5.81	5.82
	-		Bottom	-	-	-	-	-	-	-	-	-	-	-	-	-	-	-	-
12/12/2014	-	Cloudy	Surface	-	-	-	-	-	-	-	-	-	-	-	-	-	-	-	
	23:07		Middle	1.5	20.00	20.00	20.0	7.83	7.83	7.8	30.98	30.98	31.0	83.8	84.0	83.9	6.34	6.36	6.35
	-		Bottom	-	-	-	-	-	-	-	-	-	-	-	-	-	-	-	-
15/12/2014	-	Cloudy	Surface	-	-	-	-	-	-	-	-	-	-	-	-	-	-	-	
	4:05		Middle	1.5	19.10	19.10	19.1	7.86	7.86	7.9	29.74	29.74	29.7	70.0	70.6	70.3	5.43	5.48	5.46
	-		Bottom	-	-	-	-	-	-	-	-	-	-	-	-	-	-	-	-
17/12/2014	-	Fine	Surface	-	-	-	-	-	-	-	-	-	-	-	-	-	-	-	
	19:25		Middle	1.5	16.90	16.90	16.9	8.05	8.05	8.1	30.58	30.58	30.6	79.9	80.0	80.0	6.52	6.53	6.53
	-		Bottom	-	-	-	-	-	-	-	-	-	-	-	-	-	-	-	-
19/12/2014	-	Cloudy	Surface	-	-	-	-	-	-	-	-	-	-	-	-	-	-	-	
	19:38		Middle	1.5	13.00	13.00	13.0	7.80	7.80	7.8	31.15	31.15	31.2	91.7	93.4	92.6	7.35	7.48	7.42
	-		Bottom	-	-	-	-	-	-	-	-	-	-	-	-	-	-	-	-
22/12/2014	-	Cloudy	Surface	-	-	-	-	-	-	-	-	-	-	-	-	-	-	-	
	23:30		Middle	1.5	15.40	15.40	15.4	8.13	8.13	8.1	22.31	22.31	22.3	60.7	60.2	60.5	5.30	5.25	5.28
	-		Bottom	-	-	-	-	-	-	-	-	-	-	-	-	-	-	-	-
24/12/2014	-	Cloudy	Surface	-	-	-	-	-	-	-	-	-	-	-	-	-	-	-	
	0:25		Middle	1.5	17.70	17.70	17.7	7.91	7.91	7.9	28.69	28.69	28.7	75.6	77.1	76.4	6.17	6.20	6.19
	-		Bottom	-	-	-	-	-	-	-	-	-	-	-	-	-	-	-	-
26/12/2014	-	Cloudy	Surface	-	-	-	-	-	-	-	-	-	-	-	-	-	-	-	
	3:05		Middle	1.5	17.00	17.00	17.0	8.14	8.14	8.1	25.18	25.17	25.2	66.9	66.5	66.7	5.56	5.52	5.54
	-		Bottom	-	-	-	-	-	-	-	-	-	-	-	-	-	-	-	-

Remarks:
Single underline denotes exceedance over Action Level.
Double underline denotes exceedance over Limit Level.



**Water Monitoring Result at Ex-WPCWA SW - South-western corners of ex-Public Cargo Works Area
Mid-Ebb Tide**

Date	Time	Weather Condition	Sampling Depth		Water Temperature °C			pH			Salinity ppt		DO Saturation %			DO mg/L			
			m		Value	Average	Value	Average	Value	Average	Value	Average	Value	Average	Value	Average			
28/11/2014	3:21	Cloudy	Surface	1.0	23.20	23.20	23.2	7.96	7.96	8.0	22.99	22.99	23.0	84.6	84.5	84.6	6.34	6.33	6.34
	-		Middle	-	-	-	-	-	-	-	-	-	-	-	-	-	-	-	-
	3:23		Bottom	4.0	23.17	23.17	23.2	7.96	7.96	8.0	23.07	23.07	23.1	82.7	81.6	82.2	6.19	6.11	6.15
1/12/2014	22:02	Cloudy	Surface	1.0	20.80	20.90	20.9	8.06	8.06	8.1	19.55	19.55	19.6	60.3	60.7	60.5	4.67	4.71	4.69
	-		Middle	-	-	-	-	-	-	-	-	-	-	-	-	-	-	-	
	22:04		Bottom	4.0	20.90	20.90	20.9	7.99	7.99	8.0	19.40	19.43	19.4	59.8	59.3	59.6	4.63	4.59	<u>4.61</u>
3/12/2014	10:40	Cloudy	Surface	1.0	22.40	22.40	22.4	8.19	8.19	8.2	31.39	31.39	31.4	75.0	75.3	75.2	5.43	5.45	5.44
	-		Middle	-	-	-	-	-	-	-	-	-	-	-	-	-	-	-	
	10:42		Bottom	4.0	22.40	22.40	22.4	8.19	8.19	8.2	31.93	31.93	31.9	81.3	80.2	80.8	5.87	5.79	5.83
5/12/2014	-	Cloudy	Surface	-	-	-	-	-	-	-	-	-	-	-	-	-	-	-	
	-		Middle	-	-	-	-	-	-	-	-	-	-	-	-	-	-		
	-		Bottom	-	-	-	-	-	-	-	-	-	-	-	-	-	-		
8/12/2014	22:52	Cloudy	Surface	1.0	20.20	20.20	20.2	8.03	8.03	8.0	28.52	28.52	28.5	73.9	73.7	73.8	5.67	5.66	5.67
	-		Middle	-	-	-	-	-	-	-	-	-	-	-	-	-	-		
	22:53		Bottom	5.0	20.10	20.10	20.1	8.02	8.02	8.0	28.51	28.51	28.5	74.7	74.1	74.4	5.74	5.69	5.72
10/12/2014	3:04	Cloudy	Surface	1.0	20.20	20.20	20.2	8.03	8.03	8.0	22.58	22.58	22.6	53.7	53.9	53.8	4.25	4.27	4.26
	-		Middle	-	-	-	-	-	-	-	-	-	-	-	-	-	-		
	3:06		Bottom	5.0	20.20	20.20	20.2	8.01	8.01	8.0	22.57	22.57	22.6	60.2	60.9	60.6	4.78	4.83	4.81
12/12/2014	23:36	Cloudy	Surface	1.0	19.90	19.90	19.9	7.94	7.94	7.9	24.45	24.45	24.5	62.5	62.9	62.7	4.93	4.97	4.95
	-		Middle	-	-	-	-	-	-	-	-	-	-	-	-	-	-		
	23:38		Bottom	5.0	19.90	19.90	19.9	7.93	7.93	7.9	24.44	24.44	24.4	64.7	65.3	65.0	5.11	5.15	5.13
15/12/2014	8:53	Cloudy	Surface	1.0	19.50	19.50	19.5	8.07	8.07	8.1	31.40	31.40	31.4	60.5	60.4	60.5	4.92	4.91	4.92
	-		Middle	-	-	-	-	-	-	-	-	-	-	-	-	-	-		
	8:55		Bottom	4.0	19.50	19.50	19.5	8.06	8.06	8.1	31.27	31.27	31.3	66.7	66.6	66.7	5.43	5.41	5.42
17/12/2014	20:10	Fine	Surface	1.0	16.60	16.60	16.6	7.93	7.93	7.9	25.62	25.62	25.6	80.1	79.9	80.0	6.70	6.68	6.69
	-		Middle	-	-	-	-	-	-	-	-	-	-	-	-	-	-		
	20:12		Bottom	5.0	16.50	16.50	16.5	7.94	7.94	7.9	25.62	25.62	25.6	78.5	79.9	79.2	6.57	6.59	6.58
19/12/2014	20:18	Cloudy	Surface	1.0	13.10	13.10	13.1	7.96	7.96	8.0	19.84	19.84	19.8	45.4	46.2	45.8	3.90	3.97	3.94
	-		Middle	-	-	-	-	-	-	-	-	-	-	-	-	-	-		
	20:20		Bottom	5.0	12.80	12.80	12.8	7.81	7.81	7.8	19.84	19.84	19.8	55.5	57.7	56.6	4.91	4.97	4.94
22/12/2014	1:21	Cloudy	Surface	1.0	15.70	15.70	15.7	8.16	8.16	8.2	19.40	19.40	19.4	57.7	57.8	57.8	5.10	5.11	5.11
	-		Middle	-	-	-	-	-	-	-	-	-	-	-	-	-	-		
	1:23		Bottom	4.0	15.60	15.60	15.6	8.15	8.15	8.2	19.40	19.40	19.4	59.2	59.6	59.4	5.25	5.27	5.26
24/12/2014	1:50	Cloudy	Surface	1.0	17.70	17.70	17.7	7.97	7.97	8.0	22.74	22.73	22.7	64.6	65.0	64.8	5.37	5.40	5.39
	-		Middle	-	-	-	-	-	-	-	-	-	-	-	-	-	-		
	1:52		Bottom	4.0	17.70	17.70	17.7	7.96	7.96	8.0	22.73	22.73	22.7	64.9	65.5	65.2	5.39	5.45	5.42
26/12/2014	2:12	Cloudy	Surface	1.0	18.20	18.20	18.2	8.15	8.15	8.2	23.43	23.43	23.4	69.1	69.7	69.4	5.66	5.72	5.69
	-		Middle	-	-	-	-	-	-	-	-	-	-	-	-	-	-		
	2:14		Bottom	5.0	18.20	18.20	18.2	8.13	8.13	8.1	23.43	23.43	23.4	68.7	69.1	68.9	5.63	5.68	5.66

Remarks:
Single underline denotes exceedance over Action Level.
Double underline denotes exceedance over Limit Level.



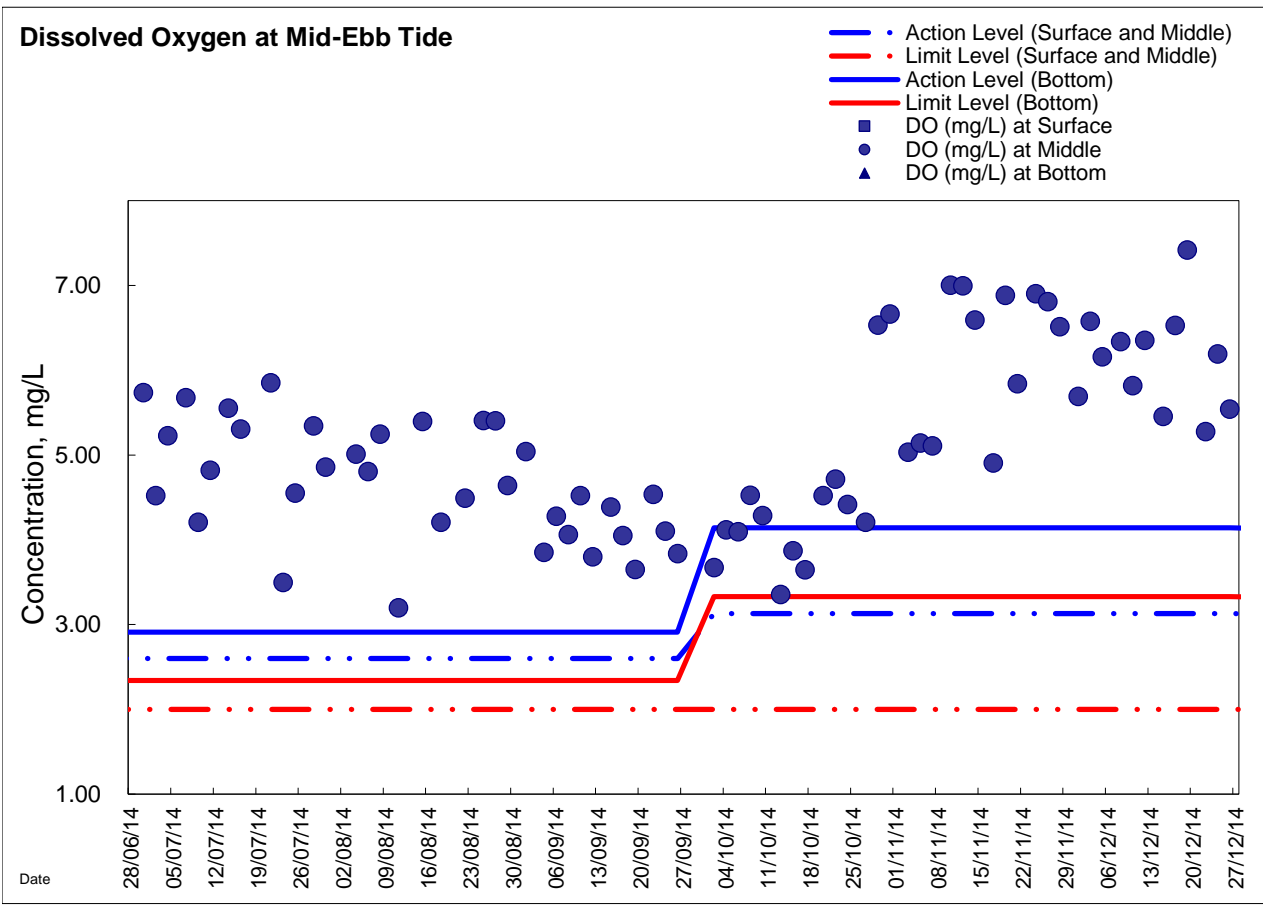
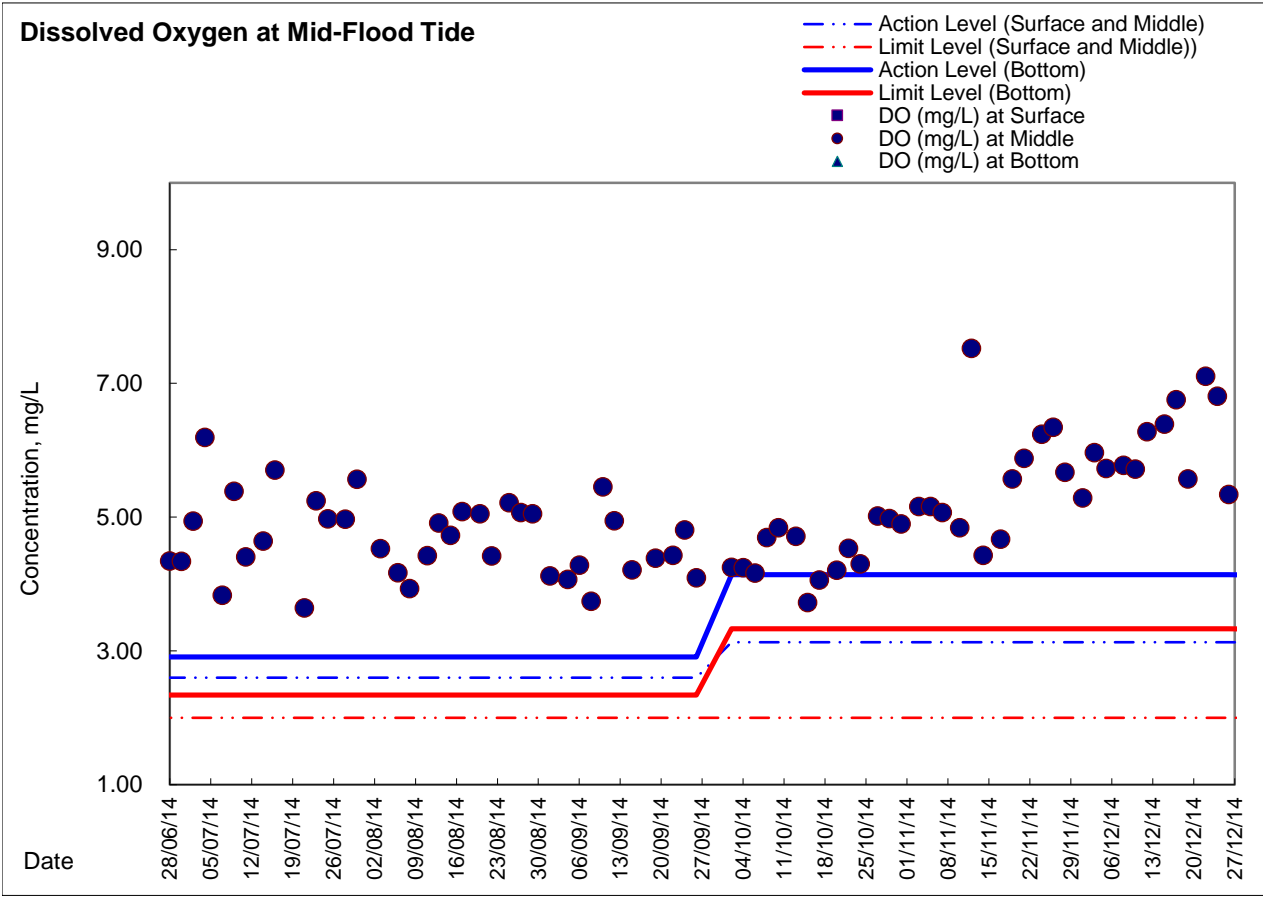
**Water Monitoring Result at Ex-WPCWA SE - South-eastern corners of ex-Public Cargo Works Area
Mid-Ebb Tide**

Date	Time	Weather Condition	Sampling Depth		Water Temperature			pH			Salinity		DO Saturation			DO			
			m		°C		-		ppt		%		mg/L						
					Value	Average	Value	Average	Value	Average	Value	Average	Value	Average					
28/11/2014	3:27	Cloudy	Surface	1.0	23.14	23.14	23.1	7.98	7.98	8.0	22.66	22.66	22.7	85.1	83.8	84.5	6.39	6.29	6.34
	-		Middle	-	-	-	-	-	-	-	-	-	-	-	-	-	-	-	-
	3:29		Bottom	4.0	23.13	23.13	23.1	7.98	7.98	8.0	22.74	22.74	22.7	81.3	80.8	81.1	6.10	6.07	6.09
1/12/2014	22:10	Cloudy	Surface	1.0	20.30	20.30	20.3	7.54	7.54	7.5	19.20	19.21	19.2	54.0	54.9	54.5	4.55	4.62	4.59
	-		Middle	-	-	-	-	-	-	-	-	-	-	-	-	-	-	-	-
	22:12		Bottom	4.0	20.30	20.30	20.3	7.54	7.54	7.5	19.32	19.32	19.3	54.7	54.7	54.7	4.61	4.61	<u>4.61</u>
3/12/2014	10:45	Cloudy	Surface	1.0	22.40	22.40	22.4	8.20	8.20	8.2	30.67	30.67	30.7	67.2	68.0	67.6	4.89	4.95	4.92
	-		Middle	-	-	-	-	-	-	-	-	-	-	-	-	-	-	-	-
	10:47		Bottom	4.0	22.30	22.30	22.3	8.18	8.18	8.2	30.94	30.94	30.9	79.7	79.5	79.6	5.78	5.77	5.78
5/12/2014	11:05	Cloudy	Surface	1.0	20.80	20.80	20.8	8.21	8.21	8.2	30.15	30.15	30.2	73.5	73.6	73.6	5.50	5.51	5.51
	-		Middle	-	-	-	-	-	-	-	-	-	-	-	-	-	-	-	-
	11:07		Bottom	3.0	21.00	21.00	21.0	8.21	8.21	8.2	31.58	31.58	31.6	80.4	80.3	80.4	5.98	5.97	5.98
8/12/2014	22:58	Cloudy	Surface	1.0	20.00	20.00	20.0	8.01	8.01	8.0	27.35	27.35	27.4	76.0	76.1	76.1	5.89	5.90	5.90
	-		Middle	-	-	-	-	-	-	-	-	-	-	-	-	-	-	-	-
	22:59		Bottom	5.0	20.00	19.90	20.0	8.01	8.01	8.0	27.29	27.29	27.3	76.3	77.4	76.9	5.95	5.99	5.97
10/12/2014	3:09	Cloudy	Surface	1.0	20.10	20.10	20.1	7.94	7.94	7.9	22.17	22.17	22.2	55.1	55.3	55.2	4.38	4.40	4.39
	-		Middle	-	-	-	-	-	-	-	-	-	-	-	-	-	-	-	-
	3:11		Bottom	5.0	20.10	20.10	20.1	7.92	7.93	7.9	22.23	22.23	22.2	68.1	69.2	68.7	5.42	5.51	5.47
12/12/2014	23:41	Cloudy	Surface	1.0	19.80	19.80	19.8	7.93	7.93	7.9	24.15	24.19	24.2	62.2	62.6	62.4	4.92	4.95	4.94
	-		Middle	-	-	-	-	-	-	-	-	-	-	-	-	-	-	-	-
	23:43		Bottom	5.0	19.80	19.80	19.8	7.92	7.92	7.9	24.24	24.25	24.2	68.8	69.6	69.2	5.49	5.50	5.50
15/12/2014	8:57	Cloudy	Surface	1.0	19.30	19.30	19.3	7.92	7.93	7.9	31.36	31.36	31.4	81.0	83.1	82.1	6.23	6.41	6.32
	-		Middle	-	-	-	-	-	-	-	-	-	-	-	-	-	-	-	-
	8:59		Bottom	4.0	19.30	19.30	19.3	7.94	7.94	7.9	31.19	31.19	31.2	80.5	80.3	80.4	6.29	6.25	6.27
17/12/2014	20:16	Fine	Surface	1.0	16.10	16.10	16.1	7.96	7.96	8.0	25.66	25.63	25.6	76.8	76.4	76.6	6.39	6.37	6.38
	-		Middle	-	-	-	-	-	-	-	-	-	-	-	-	-	-	-	-
	20:18		Bottom	5.0	16.10	16.10	16.1	7.98	7.98	8.0	25.52	25.52	25.5	78.9	78.1	78.5	6.57	6.54	6.56
19/12/2014	20:25	Cloudy	Surface	1.0	12.90	12.90	12.9	7.78	7.78	7.8	19.41	19.41	19.4	49.4	50.9	50.2	4.31	4.41	4.36
	-		Middle	-	-	-	-	-	-	-	-	-	-	-	-	-	-	-	-
	20:27		Bottom	5.0	12.80	12.80	12.8	7.77	7.77	7.8	19.31	19.34	19.3	63.0	64.1	63.6	5.47	5.56	5.52
22/12/2014	1:27	Cloudy	Surface	1.0	15.60	15.60	15.6	8.12	8.12	8.1	19.22	19.22	19.2	59.7	59.2	59.5	5.29	5.25	5.27
	-		Middle	-	-	-	-	-	-	-	-	-	-	-	-	-	-	-	-
	1:29		Bottom	4.0	15.50	15.50	15.5	8.11	8.11	8.1	19.27	19.29	19.3	61.0	61.5	61.3	5.41	5.46	5.44
24/12/2014	1:56	Cloudy	Surface	1.0	17.80	17.80	17.8	7.93	7.93	7.9	22.50	22.50	22.5	65.5	65.8	65.7	5.45	5.47	5.46
	-		Middle	-	-	-	-	-	-	-	-	-	-	-	-	-	-	-	-
	1:58		Bottom	4.0	17.80	17.80	17.8	7.93	7.93	7.9	22.54	22.54	22.5	66.1	66.5	66.3	5.97	5.99	5.98
26/12/2014	2:19	Cloudy	Surface	1.0	18.10	18.20	18.2	8.11	8.11	8.1	23.15	23.16	23.2	68.6	68.8	68.7	5.63	5.65	5.64
	-		Middle	-	-	-	-	-	-	-	-	-	-	-	-	-	-	-	-
	2:21		Bottom	5.0	18.20	18.20	18.2	8.10	8.10	8.1	23.16	23.16	23.2	68.1	69.1	68.6	5.59	5.67	5.63

Remarks:
Single underline denotes exceedance over Action Level.
Double underline denotes exceedance over Limit Level.

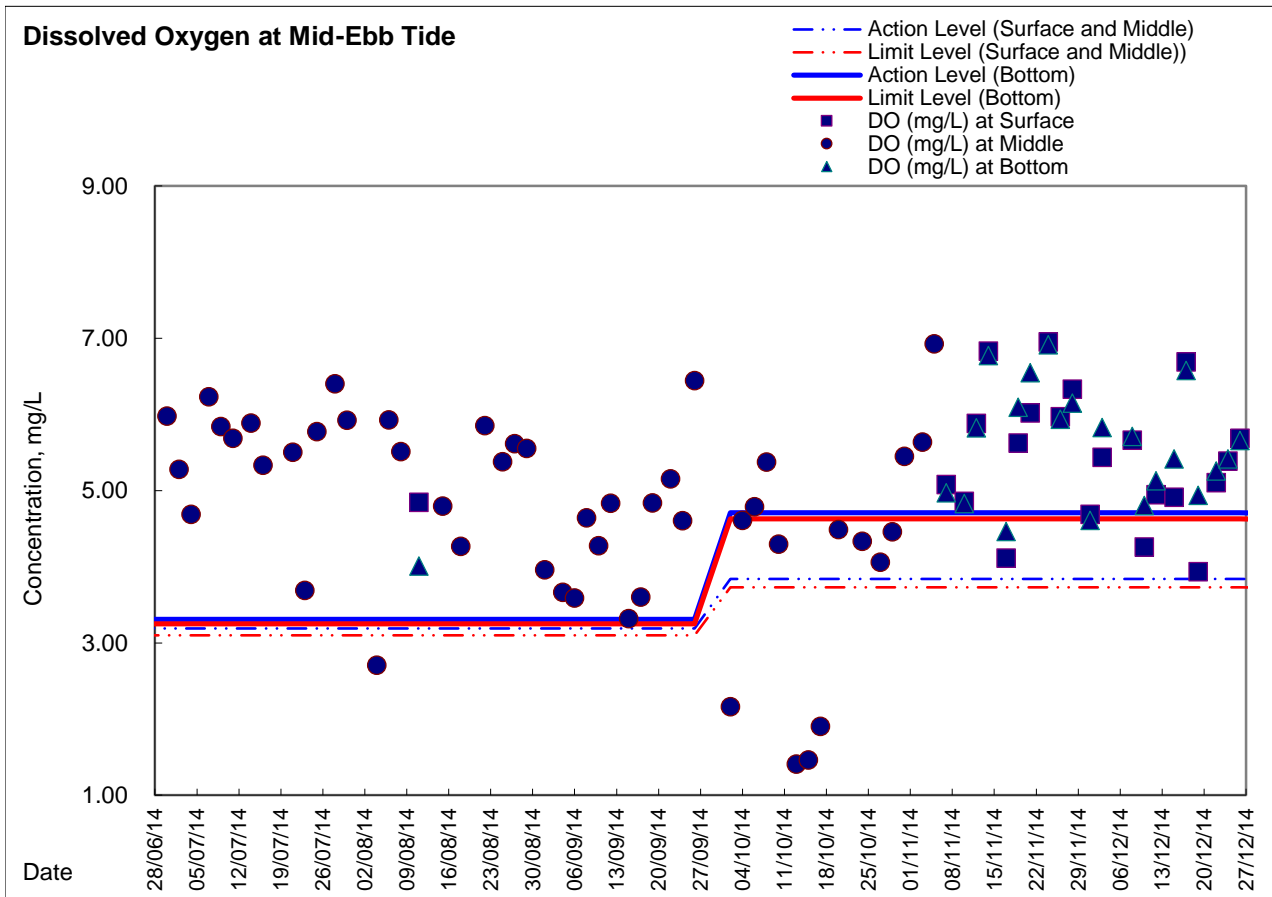
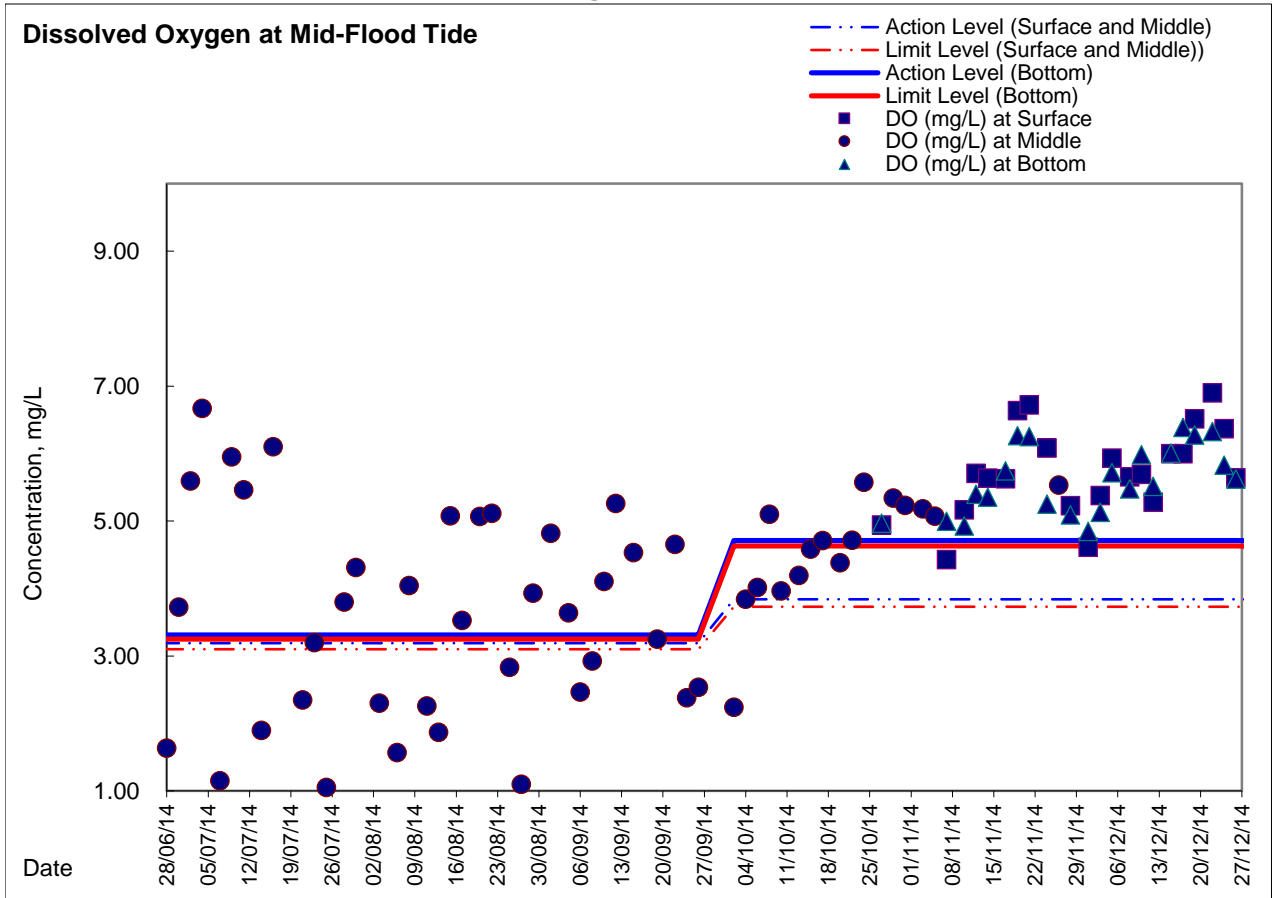


Graphic Presentation of Enhanced Water Monitoring Results (DO) at C6 - Excelsior Hotel





Graphic Presentation of Enhanced Water Monitoring Results (DO) at Ex-WPCWA SW - South-western corners of ex-Public Cargo Works Area





Graphic Presentation of Enhanced Water Monitoring Results (DO) at Ex-WPCWA SE - South-eastern corners of ex-Public Cargo Works Area

